



Upcoming Contract Outreach Event for Construction Contracts for HVAC, Odor Control, & Pump Replacement Improvement

Facility Design & Construction Division

Lauriston Lawrence, Facility Construction Manager

Jacob Beschner, PE, PMP, Facility Construction Manager

March 18, 2025

Strategic Plan for Our Smart One Water Future

Vision

In every home, in every business, we make everything possible by ensuring access to dependable and safe water for everyday life.

Smart One Water Mission

WSSC Water ensures all communities thrive by ethically delivering safe, reliable and sustainable water and wastewater services.

Promise

Continue the legacy of treasuring our water, customers and employees through dedicated service for current and future generations.

Values

Just. Accountable. Caring.

Community-Focused. Excellent. Trustworthy.



34 Objectives to Navigate Team H₂O to Our Smart One Water Future

Agenda

1. Contract Details
2. Project Team
3. Project Overview
4. Project Scope of Work
5. Keys to Success
6. Questions



Contract Details

Contract Details

- Four separate construction contracts
- Contract Delivery Method: Design-Bid-Build
- Designs are completed; Contracts are for construction services
- Each project is similar in size and scope
- Majority of work consists of mechanical improvements
- Advertised and Bid
- Minimum Qualifications
- Low Bid
- MBE/SLBE Percentage requirement



Project Team

WSSC Water Project Team

Green Branch WWPS

- **Facility Construction Manager**
 - Lauriston Lawrence
- **Engineer of Record**
 - Stantec Consulting
- **WWPS Facility Support**
 - Facility Superintendent
- **Instrument & Control Support**
 - Process Control Department

Mill Branch WWPS

- **Facility Construction Manager**
 - Lauriston Lawrence
- **Engineer of Record**
 - Stantec Consulting
- **WWPS Facility Support**
 - Facility Superintendent
- **Instrument & Control Support**
 - Process Control Department

*All four projects to have FDCD Inspection Support

WSSC Water Project Team – Cont'd

Patuxent WFP

- **Facility Construction Manager**
 - Jacob Beschner
- **Engineer of Record**
 - CDM Smith
- **WFP Facility Support**
 - Facility Superintendent
- **Instrument & Control Support**
 - Process Control Department

Western Branch WRRF

- **Facility Construction Manager**
 - Jacob Beschner
- **Engineer of Record**
 - CDM Smith
- **WRRF Facility Support**
 - Facility Superintendent
- **Instrument & Control Support**
 - Process Control Department

Contractor's Ideal Project Team

- **Construction General Contractor**

- Water/Wastewater Facility
HVAC Upgrades
- Project Manager,
Superintendent

- **Administrative Support**

- Scheduling, Cost Estimating

- **Disciplines (Subcontracted or Internal)**

- Civil

- Architectural

- Structural Concrete

- Electrical

- Mechanical (HVAC and Others)

- Instrumentation / Controls

- **Manufacturer**

- Equipment / Material Supply
and Support



Project Overview

Project Overview

Green Branch WWPS HVAC & Pump Improvements

Location: 4200 NW Crain Highway
(Rt 301), Bowie, MD

Overview: Improvements needed to address insufficient/ non-compliant Ventilation (HVAC) and sewer Pumps reliability issues at the Pump Station.

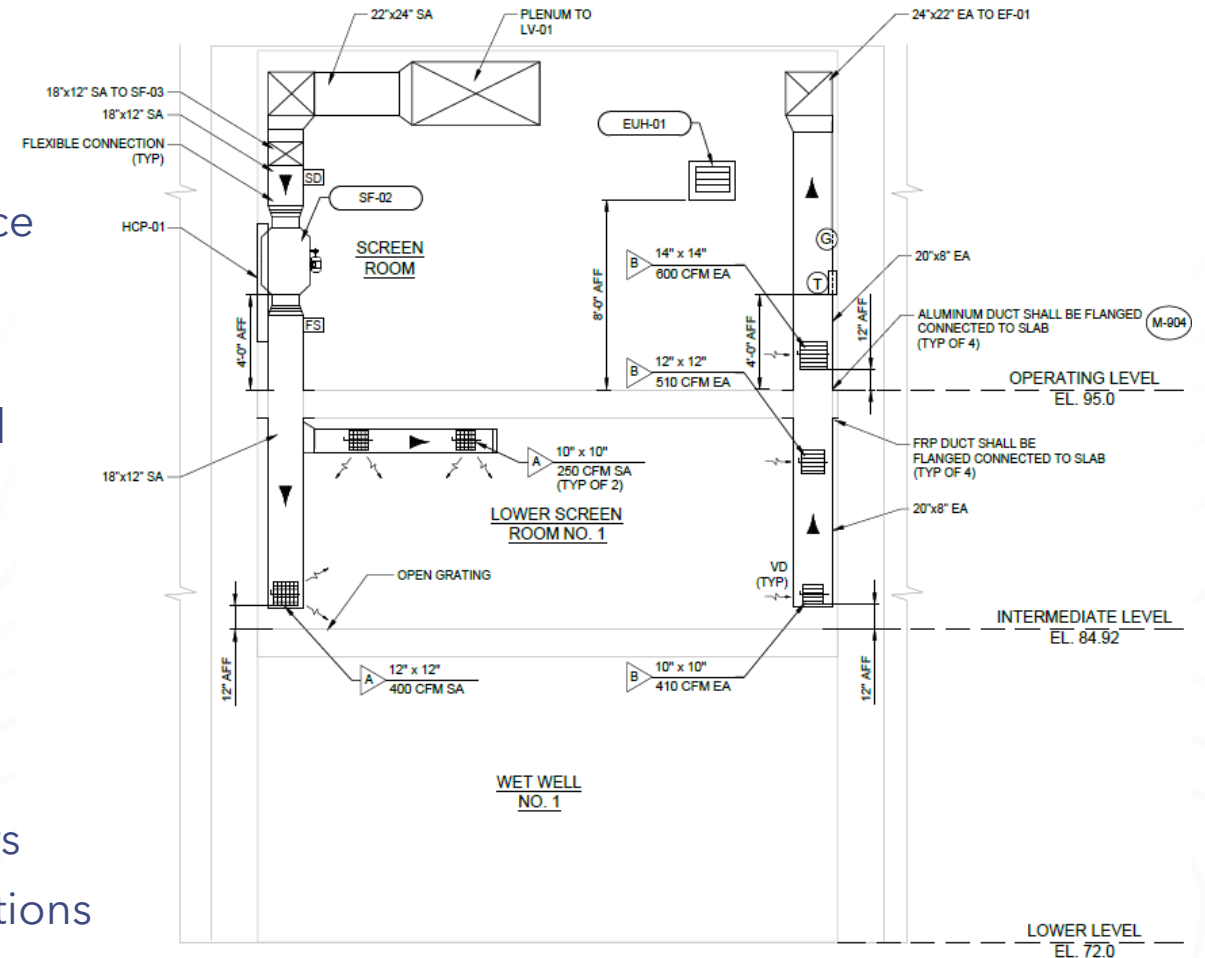


Project Overview

Green Branch WWPS HVAC & Pump Improvements

Scope:

- **HVAC and Plumbing Improvements**
 - Replacement of existing HVAC system -compliance w/NFPA 820
- **Electrical Improvements**
 - HVAC and Pump Control Panel-related electrical connections
 - Lighting
- **Instrumentation & Process Control System Upgrade**
 - Pump Control Panel w/field instruments
 - Combustible gas monitoring transmitter & sensors
 - Instrumentation Panel & related electrical connections
 - HVAC control panel, instruments, and alarms



Project Overview

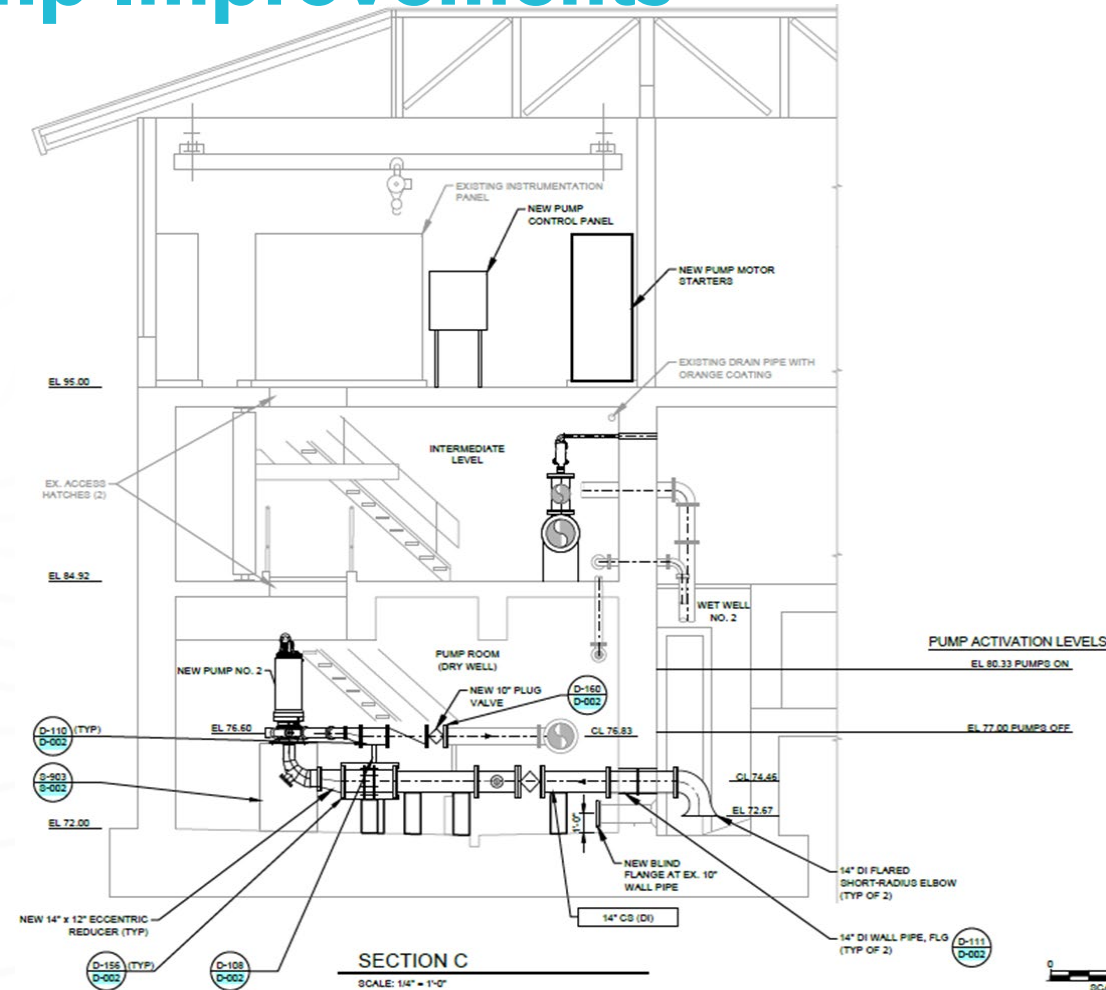
Green Branch WWPS HVAC & Pump Improvements

Scope Cont'd:

- **Pump Improvements**
 - Replacement of 2 dry-pit submersible wastewater pumps (including related piping & instrumentation)
- **Structural & Architectural Rehab**
 - Pump Bases
 - Other minor structural repairs & modifications
 - New wall openings and modification of existing openings
 - Metal doors replacement

Anticipated Challenges:

- **Maintenance of Plant Operations**
 - Temp Bypass Pumping for out-of-service systems - Pump replacement
 - Continuous site access for Plant staff
 - Parking & traffic awareness
- **Construction Nuisance Control**
 - Noise and Odor control - commercial area

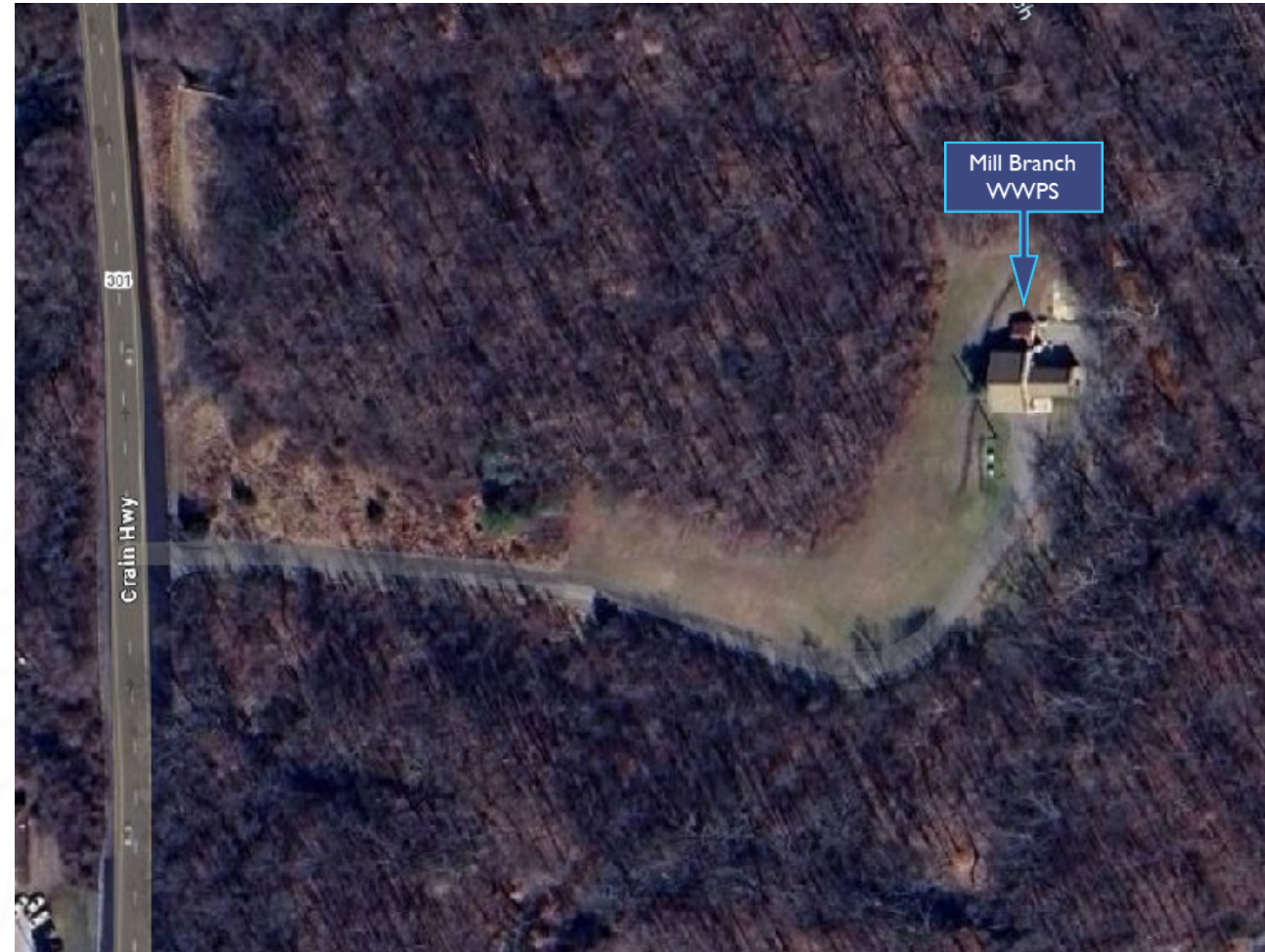


Project Overview

Mill Branch WWPS HVAC & Odor Control Improvements

Location: 2701 N.E. Crain Highway
(Rt 301), Bowie, MD

Overview: Improvements needed to address insufficient/ non-compliant Ventilation (HVAC) and Odor Control issues at the Pump Station.

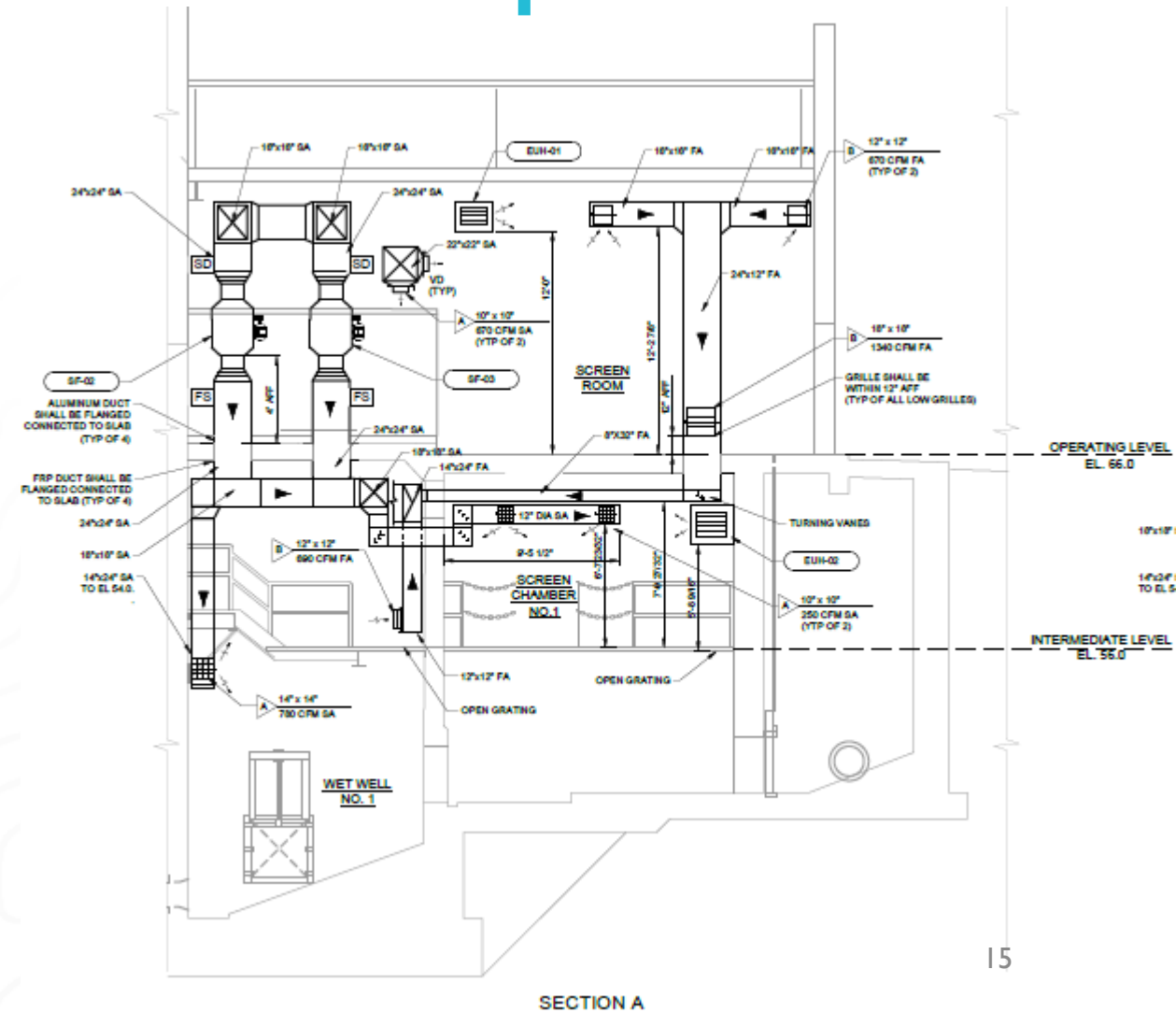


Project Overview

Mill Branch WWPS HVAC & Odor Control Improvements

Scope:

- **HVAC and Plumbing Improvements**
 - Replacement of existing HVAC system - compliance w/NFPA 820
- **Electrical Improvements**
 - HVAC and Odor Control Panel-related electrical connections
 - Lighting
- **Instrumentation & Process Control System upgrade**
 - HVAC and Odor Control Panel, and related electrical connections
 - Combustible gas monitoring transmitter & sensors



Project Overview

Mill Branch WWPS HVAC & Odor Control Improvements

Scope Cont'd:

- **Odor Control Improvements**

- Replacement of existing Odor Control system – compliance w/HVAC and Odor Control improvement requirements

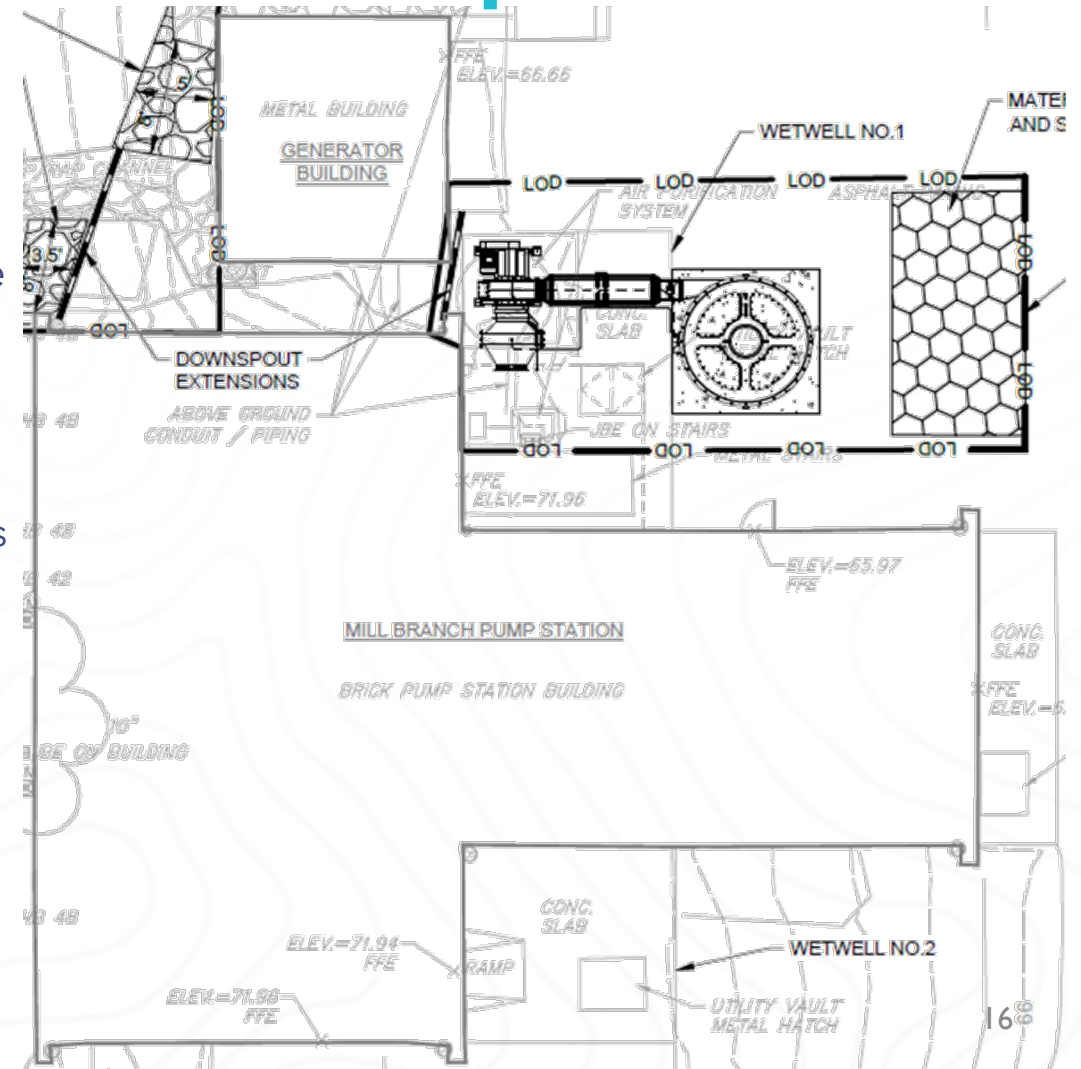
- **Structural & Architectural Rehab**

- New wall openings and modification of existing openings
- Odor Control equipment foundation support Pad modifications
- Other minor structural repairs & modifications

Anticipated Challenges:

- **Maintenance of Plant Operations**

- MOPO during upgrades
- Continuous site access for Plant staff
- Parking & traffic awareness



Project Overview

Patuxent WFP Chemical Building HVAC

Location: 6101 Sandy Spring Rd, Laurel, MD 20707

Overview:

- Replacement of two roof top HVAC units:
 - CB-HVAC-1, installed in the early 1980's and services the eastern half of the 2nd floor.
 - AHU-1A, replaced previously in 2001 and services the western half of the 2nd floor.



Project Overview

Patuxent WFP Chemical Building HVAC

Scope:

• Mechanical Improvements

- HVAC units and Ductwork

• Structural & Architectural

- Ceiling replacement
- Wall penetrations

- Equipment pads

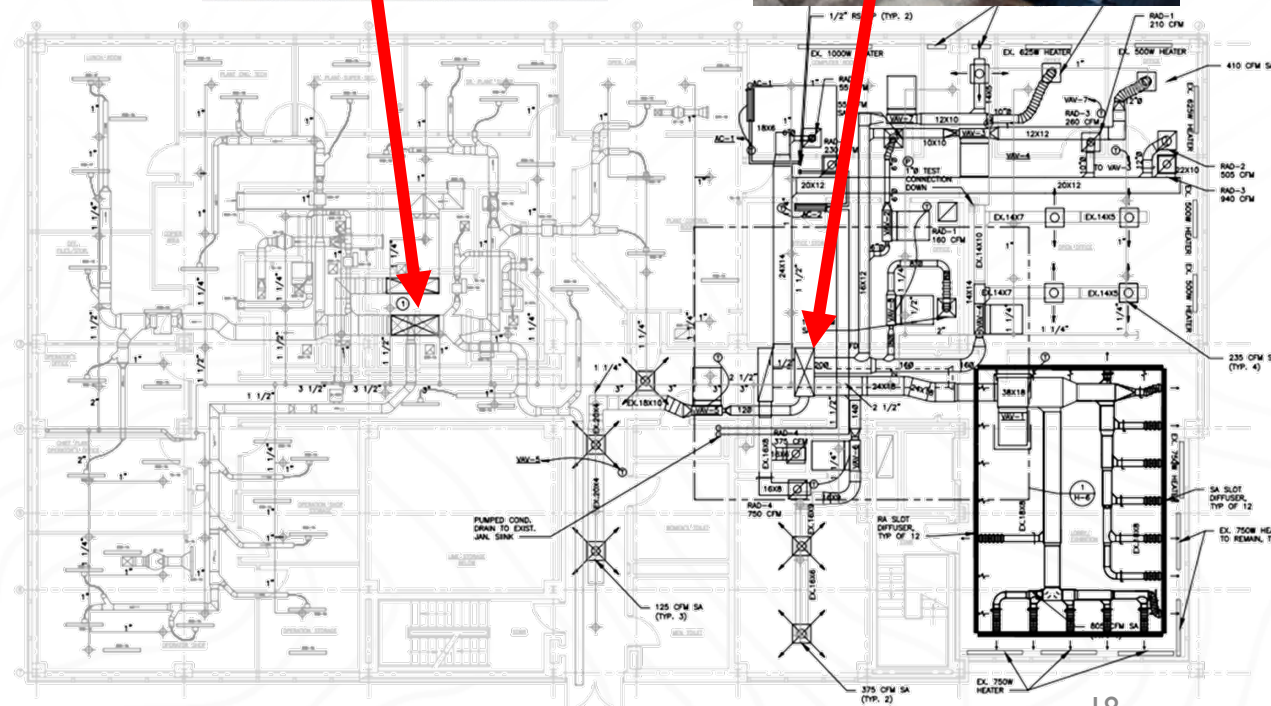
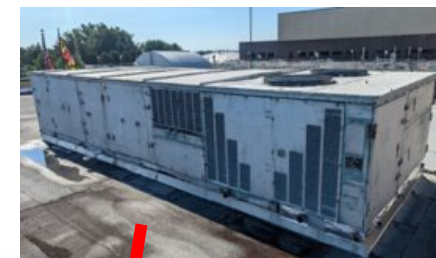
• Electrical Modifications

• Instrumentation & Controls

- VAV's & Control Panels

Anticipated Challenges:

Location of HVAC units (rooftop)



Project Overview

Western Branch WRRF Raw Influent VFD Climate Control

Location: 6600 Crain Hwy, Upper Marlboro, MD 20772

Overview:

The Influent Building is not conditioned and the VFD's have individual A/C units on the cabinets. This project will provide cooling to the entire upper room of the Influent Building and modifications to the VFD cabinets.



Project Overview

Western Branch WRRF Raw Influent VFD Climate Control

Scope:

- **Site Civil**
- **Mechanical Improvements**
 - HVAC units and Ductwork
 - Modifications to VFD cabinets
 - Re-purposing of existing exhaust fans
- **Structural & Architectural**
 - Separate spaces (walls/doors)
 - Wall penetrations
 - Equipment pads
- **Electrical Modifications**
- **Instrumentation and Controls**
 - Panels





Keys to Success

Keys to Success

- Responsiveness
- Coordination
 - Shutdowns
 - Stakeholders informed
- Maintenance of plant operations
- Quality Control
- Familiarity with Contract Docs (esp. Drawings & Specification)
- Timeliness in communication
- Effective Testing, Training & Commissioning



Questions?

Submit your questions to askprocurement@wsscwater.com

For event presentations and sign in sheets, visit www.wsscwater.com/work-us/procurement/outreach-events

