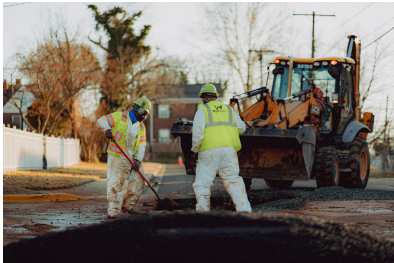


## Water We Up To?



### WSSC Water Is Winter Ready

During a typical year, we repair more than 1,700 water main breaks and leaks, approximately 65 percent of which occur between November and February. Our crews are committed to serving our customers 24/7/365 and are prepared to respond this winter.

[Learn more](#)



**CNS** Customer Notification System

Receive alerts about WSSC Water-related incidents near your home, office, school, or other important addresses.

Register for *text or email* alerts on up to three addresses.

**REGISTER AT [WSSCWATER.COM/CNS](http://WSSCWATER.COM/CNS)**

### Customer Notification System

Did you know you can receive emails or texts about water and sewer emergencies in your community? Be prepared for water main break season by signing up for our Customer Notification System today!

[Learn more](#)



### Protecting Your Pipes

Take steps now to protect your home and pipes from the cold weather. Follow our tips to get your home winter ready.

[Learn more](#)




### Give the Gift of Water

Many families in our community are struggling to pay their water and sewer bills. Thankfully, our Water Fund can help. Your tax-deductible donation can make a critical difference, and 100 percent of all donations go directly to customers in need.

[Learn more](#)

[Visit our Website](#)

 [Share This Email](#)

 [Share This Email](#)

 [Share This Email](#)

*WSSC Water is the proud provider of safe, seamless and satisfying water services, making the essential possible every day for our neighbors in Montgomery and Prince George's counties. We work to deliver our best because it's what our customers expect and deserve.*



WSSC Water | 14501 Sweitzer Lane | Laurel, MD 20707 US

[Unsubscribe](#) | [Update Profile](#) | [Constant Contact Data Notice](#)



Try email marketing for free today!