



Environmental Engineering Services Basic Order Agreement Upcoming Contract Outreach Event

Pipeline Design Division / Pipeline Construction Division

Walid Halboni, Project Manager

August 14, 2024

Meeting Etiquette

- Keep your phones on the silent or vibrate mode.
- There will be time for questions and networking after the presentation.
- Information shared at this meeting is not binding as all communications are verbal.
- WSSC has the right not to answer questions

Agenda

1. Team Introductions
2. Project Objectives
3. Project Overview
4. Project Challenges
5. Project Goals
6. Questions

Team Introductions

Team Introductions

Pipeline Design Division (PDD)

Caville Stanbury-Woolery, Division Manager

Patricia Vaughan-Braimbridge, Section Manager

Walid Halboni, Project Manager

Steven Jackson, Project Manager

Pipeline Construction Division (PCD)

Nadir Al-Salam, Division Manager

Jason Flory, Construction Manager

Tim Allen, Construction Manager

Kevin Lethbridge, Construction Manager

Project Objectives

Project Objectives

Environmental Engineering Services Contract No. PM0002A23, Three Years Base Term with One Option Term for Two years

Provide Environmental Engineering Services for projects in Montgomery and Prince George's Counties, including design services to repair, rehabilitate, replace, and relocate assets (sewer collection system and water distribution system pipelines and appurtenances) located in the Road and Environmentally Sensitive Areas (ESAs); Provide permitting/coordination services and staff resources in support of the design and preparation of contract documents (plans and specifications); as well as the design for protection of exposed assets.

Work includes, but is not limited to:

- Engineering Support and Assessments
- Engineering and Design Services

Engineering Support and Assessments



- Inspection, testing, and evaluation services for sewer pipelines and appurtenances
- Inspection, testing, and evaluation services for water pipelines and appurtenances

Engineering and Design Services



- Data Accumulation and Evaluation
- Identify Access Roads
- Verification of existing conditions
- Prepare complete Bid-Ready Contract Documents in accordance with WSSC standards for bidding and construction.
- Assistance during bid
- Engineering and design services during construction
- Industry Research and Specification Writing
- Asset Commissioning

Project Overview

Project Overview (Wastewater Assets)



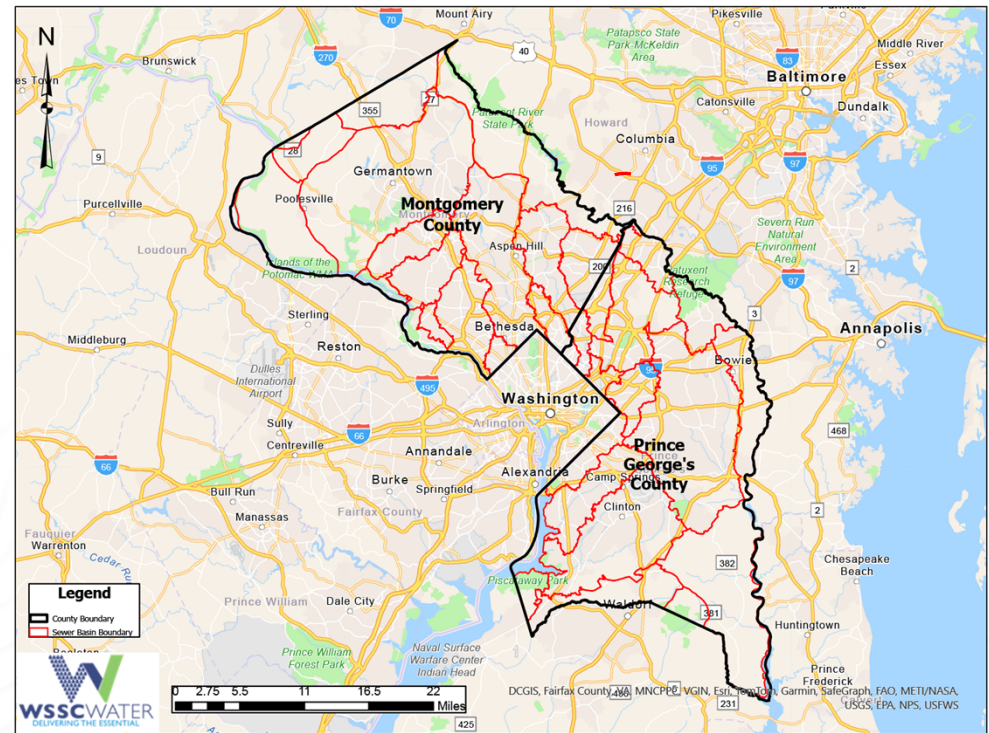
Engineering and Design Services

Contract No. PM0002A23

Montgomery County & Prince George's Counties

The approximate quantity of wastewater assets needing rehabilitation are:

- **ESA:** 6,645 sewer segments, 239.09 miles including 58.85 miles in the Environment Justice Area (EJA) & 8,382 manholes
- **Road:** 12,769 sewer segments, 547.86 miles including 155.37 miles in the (EJA) & 2792 manholes
- **Total Road & ESA:** 19,414 sewer segments, 787 miles including 214.22 miles in the (EJA) & 11,174 manholes



Project Overview (Wastewater Assets)



Engineering and Design Services

Contract No. PM0002A23

Montgomery County

Total Basins: Sixteen (16) Basins

ESA

Montgomery County	
Mainlines Sewer Segments	3710
Miles	126
EJA Miles	8
Manholes	3650

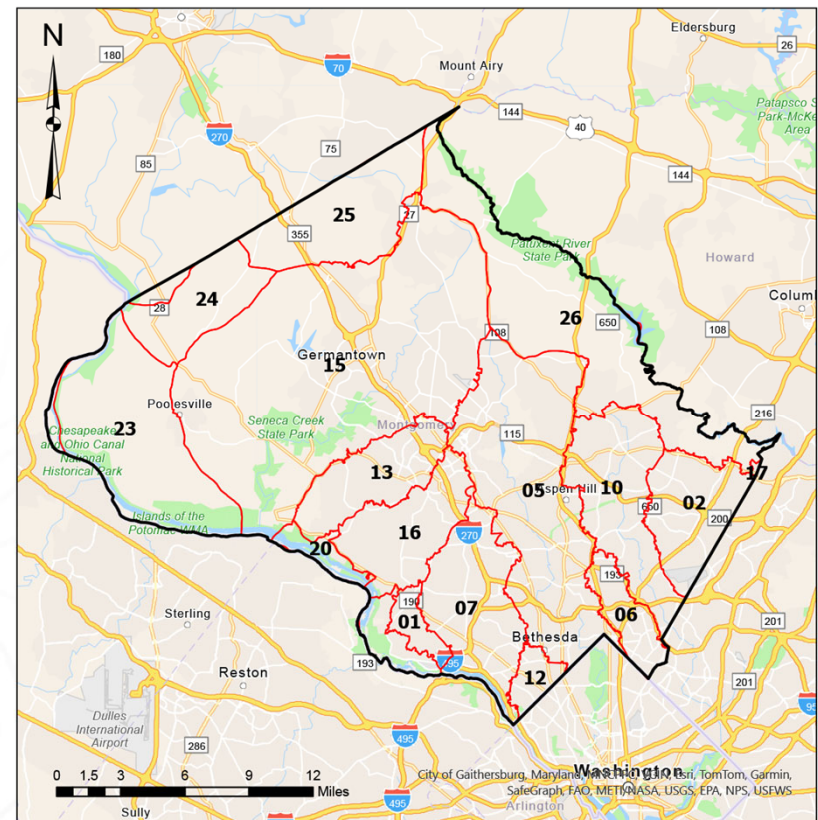
ROAD

Montgomery County	
Mainlines Sewer Segments	6293
Miles	266
EJA Miles	14
Manholes	807

Montgomery County Sewer Basins

- 01 - Rock Run
- 02 - Paint Branch
- 05 - Rock Creek
- 06 - Sligo Creek
- 07 - Cabin John
- 10 - Northwest Branch
- 12 - Little Falls
- 13 - Muddy Branch
- 15 - Seneca Creek
- 16 - Watts Branch
- 17 - Parkway
- 20 - Dulles Interceptor
- 23 - Upper Potomac
- 24 - Little Monocacy
- 25 - Monocacy
- 26 - Patuxent North

Legend
 County Boundary
 Sewer Basin Boundary



Project Overview (Wastewater Assets)



Engineering and Design Services

Contract No. PM0002A23

Prince George's County

Total Basins: Eighteen (18) Basins

ESA

Prince George's County	
Mainlines Sewer Segments	2935
Miles	113
EJA Miles	51
Manholes	4732

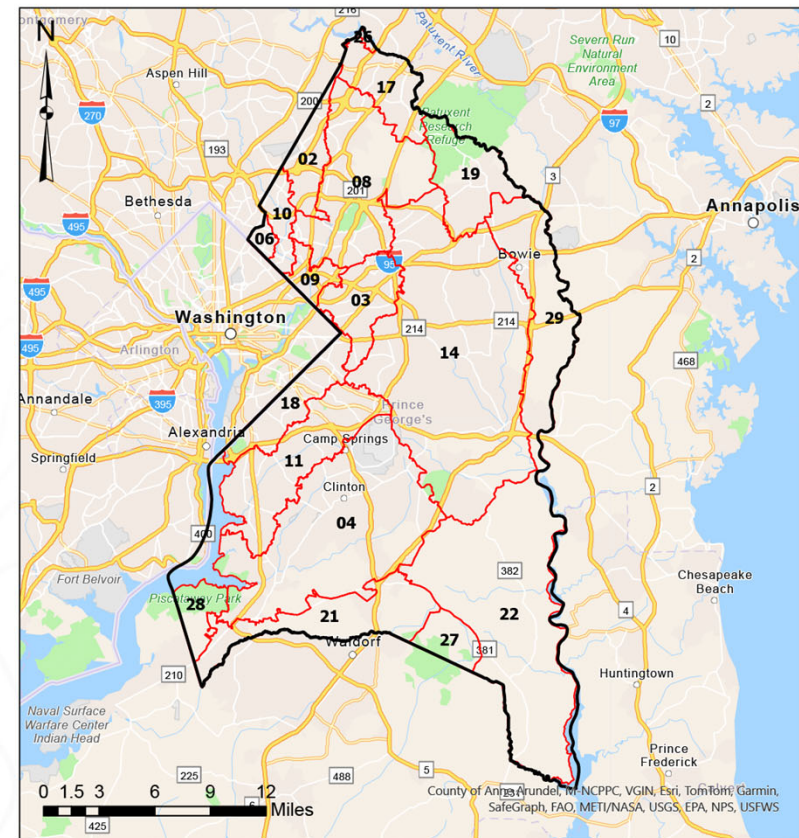
ROAD

Prince George's County	
Mainlines Sewer Segments	6476
Miles	282
EJA Miles	142
Manholes	1985

Prince George's County Sewer Basins

- 02 - Paint Branch
- 03 - Beaverdam
- 04 - Piscataway Creek
- 06 - Sligo Creek
- 08 - Northeast Branch
- 09 - Lower Anacostia
- 10 - Northwest Branch
- 11 - Broad Creek
- 14 - Western Branch
- 17 - Parkway
- 18 - Oxon Run
- 19 - Horsepen
- 21 - Mattawoman
- 22 - Patuxent South
- 26 - Patuxent North
- 27 - Zekiah Swamp
- 28 - PG Potomac River South
- 29 - Patuxent Center

Legend
 County Boundary
 Sewer Basin Boundary



Project Challenges

Project Challenges

- Material Availability and Delivery
- Permits/Right of Entry
- Mandatory Referrals
- Maryland Department of Environmental CP-20
- Access Roads
- Sewer Bypass System

Project Goals

Project Goals

- The consultant will work on the assets in our mileage goal for the fiscal year
- The consultant will work on the assets that are already in design and construction.
- The goal for each year will be approximately 35 miles.
- The number of assets/miles, shown on the slides, is the approximate backlog mileage.



Questions?

Submit your questions to supplierdiversity@wsscwater.com

For past event's presentations and sign in sheets, visit www.wsscwater.com/work-us/procurement/outreach-events

