



# Capital Improvements Program (CIP)

Community Outreach Event

**Eyad Mizian, P.E. Chief Engineer**  
**Dan Hamilton, Section Manager**  
**Jason Flory, Section Manager**  
**Kevin Lethbridge, Section Manager**  
**Collins Njoku, Section Manager**

May 16, 2024

# Agenda

WSSC Water Overview

Project Development

- Timeline
- Project Prioritization Approach
- Current Programs

Community Outreach Process

Current Projects

Community Questions

**106** years & counting  
No drinking water quality violations...ever!



# WSSC WATER AT A GLANCE



Established in 1918, WSSC Water is the largest water/wastewater utility in Maryland and among the largest in the nation. Our service area spans approximately 1,000 square miles in Prince George's and Montgomery counties. We proudly serve 1.9 million residents with safe and reliable drinking water and help protect the Chesapeake Bay by treating and returning clean water back to Maryland waterways.



**162,000,000** GALLONS OF WATER PER DAY  
DELIVERED TO **1.9 MILLION** RESIDENTS

**3** RESERVOIRS

**2** WATER FILTRATION PLANTS

**60** WATER TANKS

**55** PUMPING STATIONS

**6** WATER RESOURCE RECOVERY FACILITIES

**1,630** EMPLOYEES

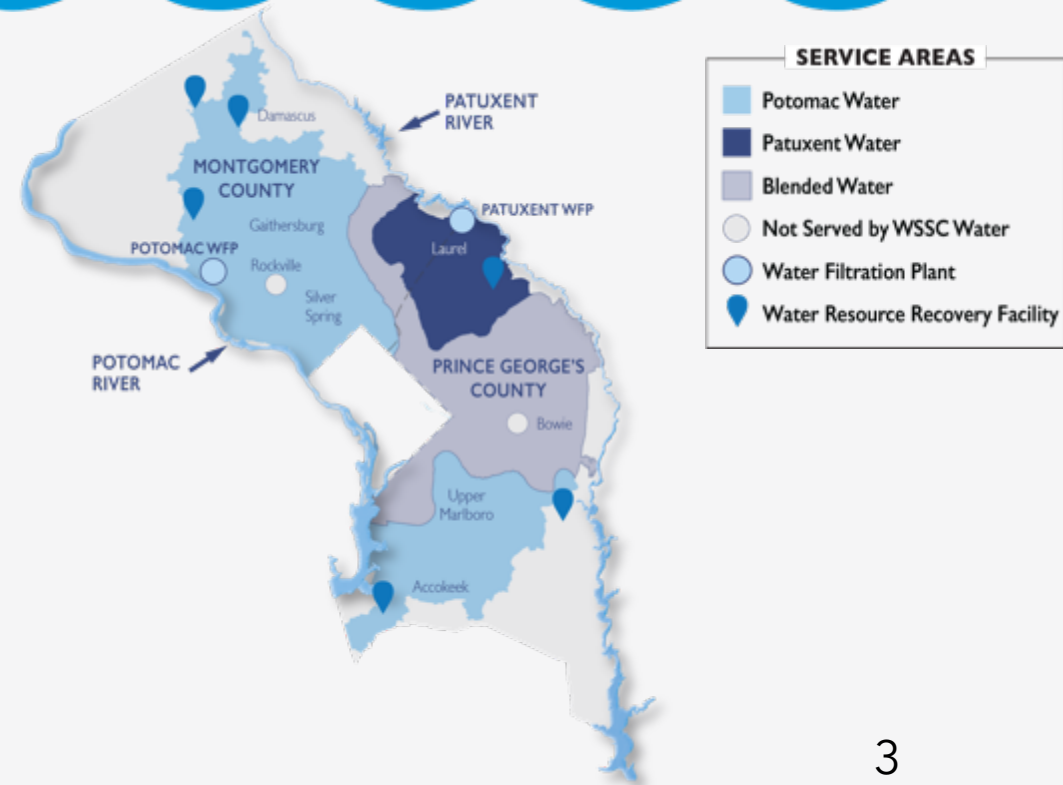
Our drinking water system spans **5,800+** miles

Our wastewater system spans **5,600+** miles

**500,000** WATER QUALITY TESTS PER YEAR

**504,800** METERS IN OUR SYSTEM

**2.25** MILLION METER READS PER YEAR





## Improving Critical Infrastructure

Investing in critical infrastructure enables WSSC Water to maintain compliance with the Safe Drinking Water & Clean Water Acts.



A robust Capital Improvements Program also creates jobs & enhances the economic output of both Montgomery & Prince George's counties.

EVERY **\$1M** INVESTED IN WATER  $\approx$  **15-18 JOBS** CREATED

WSSC Water's proposed FY25 budget increases & aligns investments to drive infrastructure improvements to disadvantaged communities.



## Enhancing Financial Metrics to Retain our AAA Bond Rating

The financial impact of a AAA downgrade is estimated as high as

**\$148M**

over 30 Years

WSSC Water's revenue enhancement is, in part, necessary to bring sustainable improvements to the financial metrics of the utility to retain the AAA bond rating & remove the negative outlook.



## Maintaining Operational Reliability and Resilience

A revenue enhancement is necessary to overcome inflationary pressures/rising costs

HEAT, LIGHT & POWER	BLUE PLAINS WSSC WATER'S SHARE	CHEMICALS
↑ 11%	↑ 38%	↑ 89%

Another driver of the proposed FY25 revenue enhancement is overcoming **6 years of no rate increases** (1999 - 2004) & the lag in rate increase requests in prior years. **Over the past 6 years, approved rate increases were 8.2% lower than requested, resulting in a \$178M loss of rate revenue.**



## Protecting Income-Constrained Customers

Our FY25 budget includes a **\$4.2M increase** in financial assistance to help protect income-constrained customers, bringing the total to **more than \$7.7M - a 121% increase.**



## Building a Strong Workforce

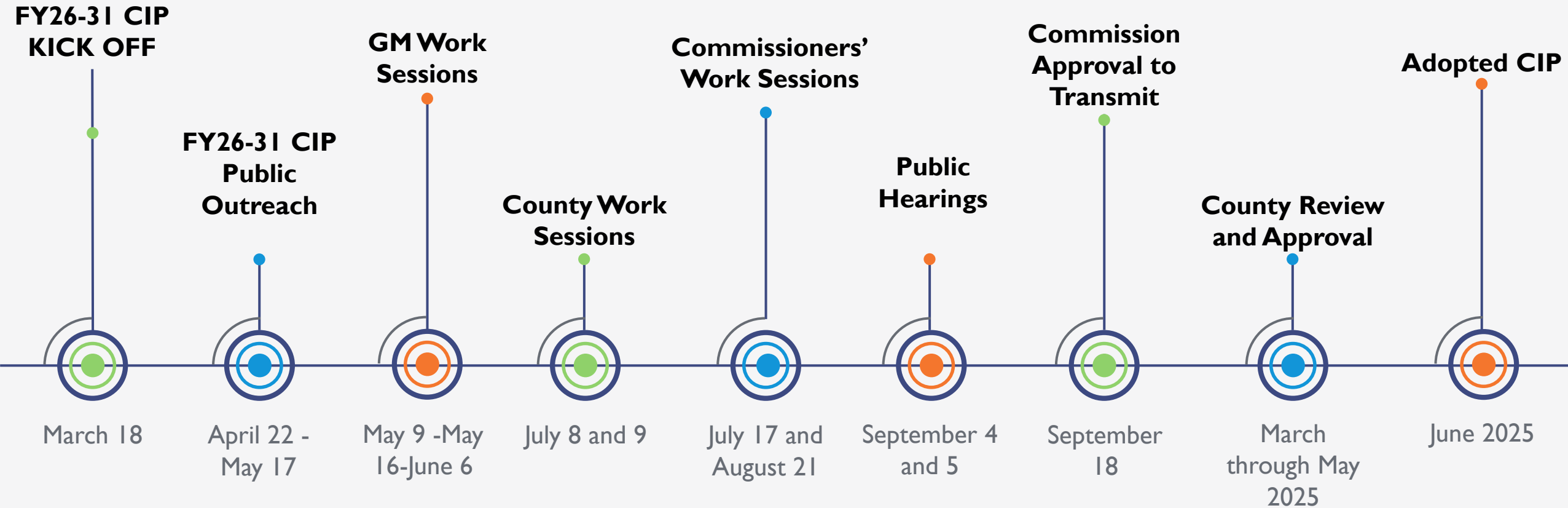
**43%**

WSSC Water's Workforce Live in the Service Area

Our proposed FY25 budget increases investment in our workforce to allow WSSC Water to remain competitive & recruit, retain & engage skilled workers to carry out our one water mission. In addition, competitive wages helps the local economy as **43% of WSSC Water's workforce lives in the service area.**



# CIP Development Timeline



*CIP Planning Timeline has been updated to incorporate high level internal reviews and community engagement*

# WSSC Water's PRIORITIES



Building a  
Strong Workforce



Service  
Delivery



Financial  
Stewardship



Regulatory  
Challenges



Operational Reliability  
& Resilience



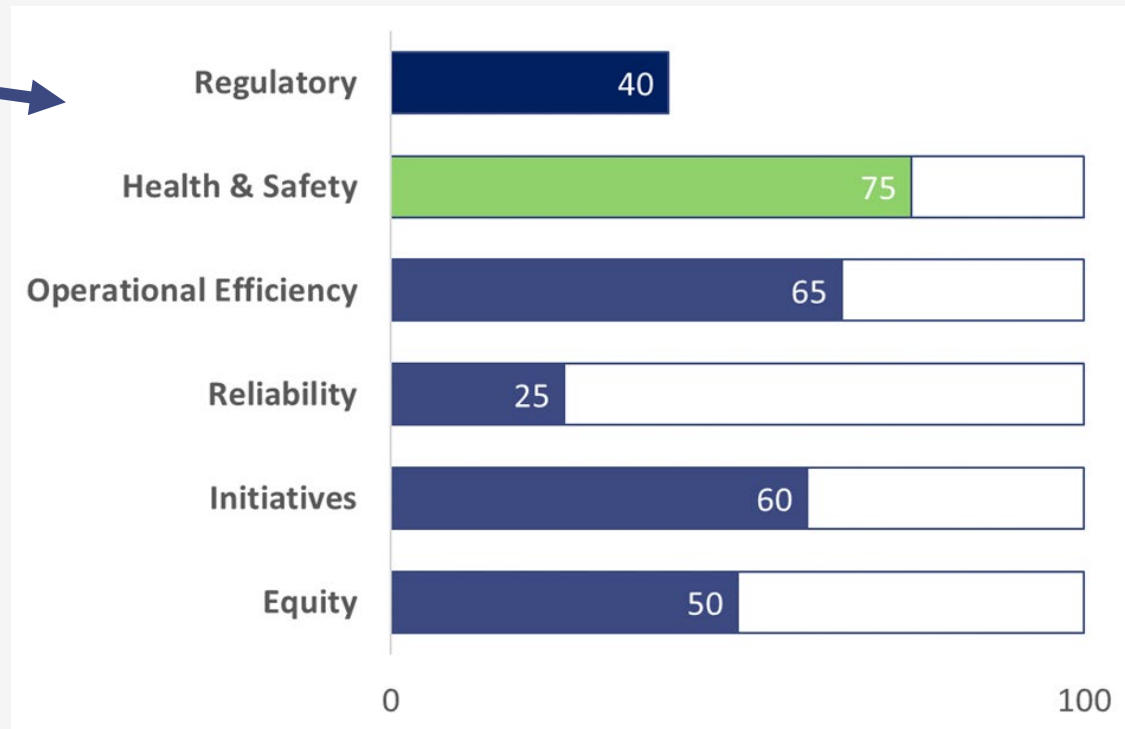
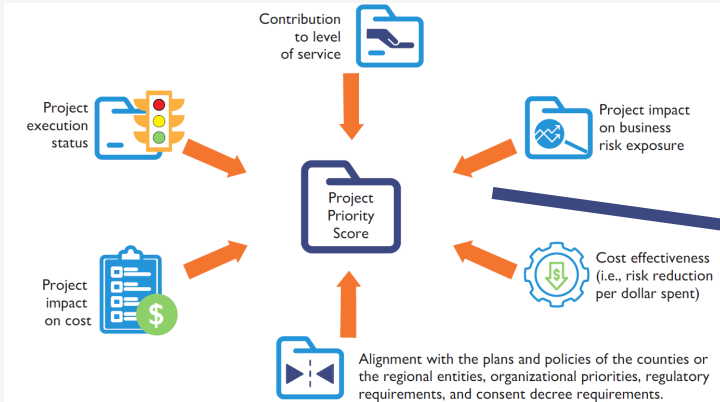
DEI&EJ



# CAPITAL IMPROVEMENT PROGRAM (CIP) OVERVIEW

- 8 Program Areas
- CIP is organized within the following major sections:
  - Montgomery County Water
  - Montgomery County Sewer
  - Bi-County Water
  - Bi-County Sewer
  - Prince George's County Water
  - Prince George's County Sewer
  - Information Only

# Revised Project Prioritization Scoring



**Prioritization allows us to provide Equity visibility and identify drivers for each project.**



# DRIVERS OF EQUITY AND ENVIRONMENTAL JUSTICE AT **WSSC WATER**



Montgomery County  
Equity Focus Areas (EFA)



Prince George's County  
Revitalization Tax  
Credit Areas (RTA)



Metropolitan Washington  
Council of Governments  
(MWCOG)  
Equity Emphasis Areas



Customers/Disadvantaged  
Communities



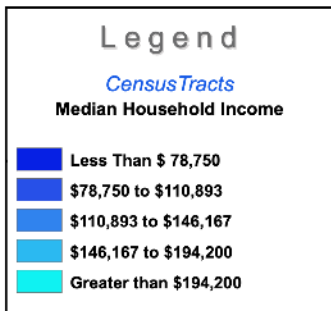
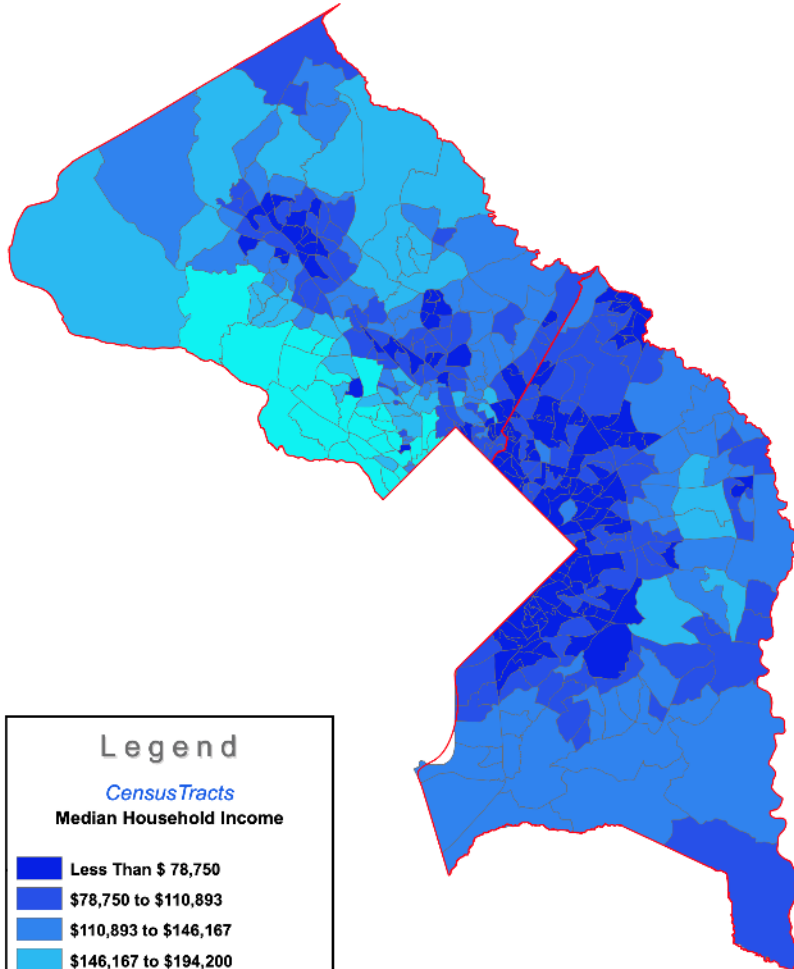
State of Maryland  
Priority Funding Areas



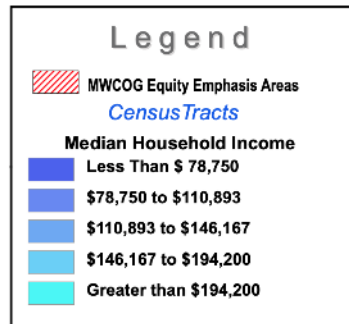
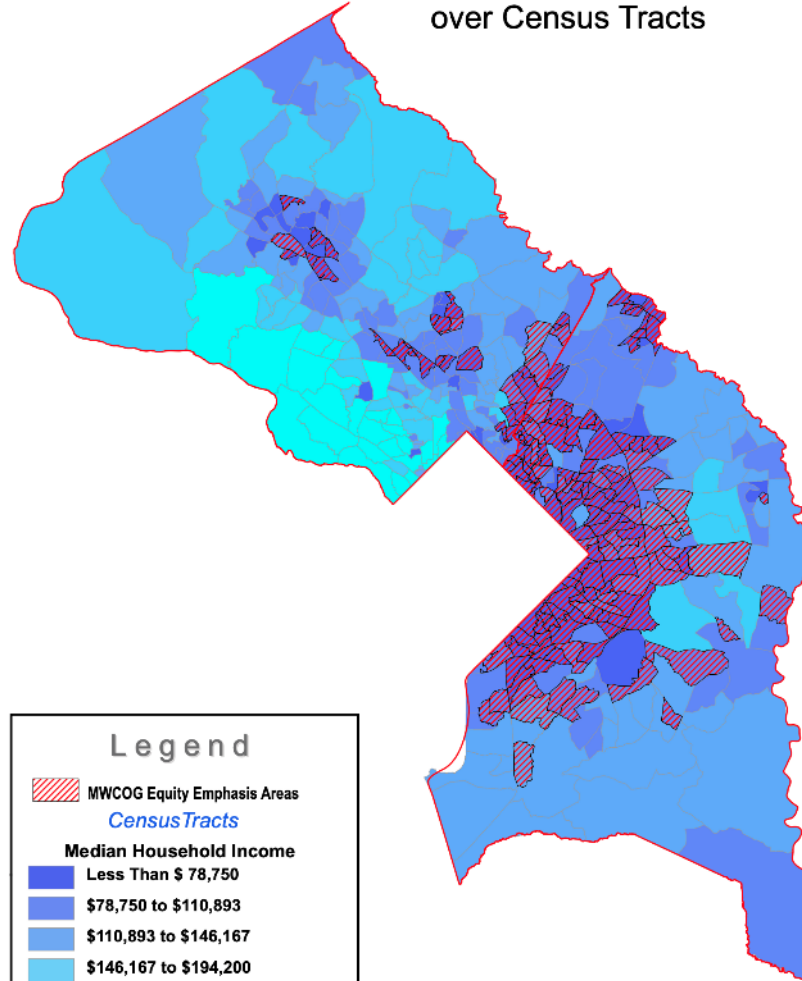
U.S. Environmental  
Protection Agency  
BIL, IRA, Justice40,  
Environmental Justice

# Equity And Environmental Justice

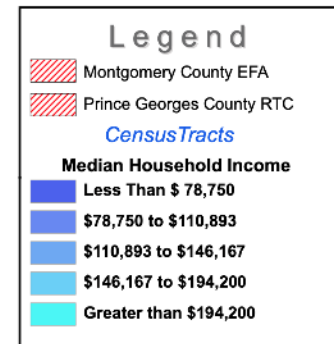
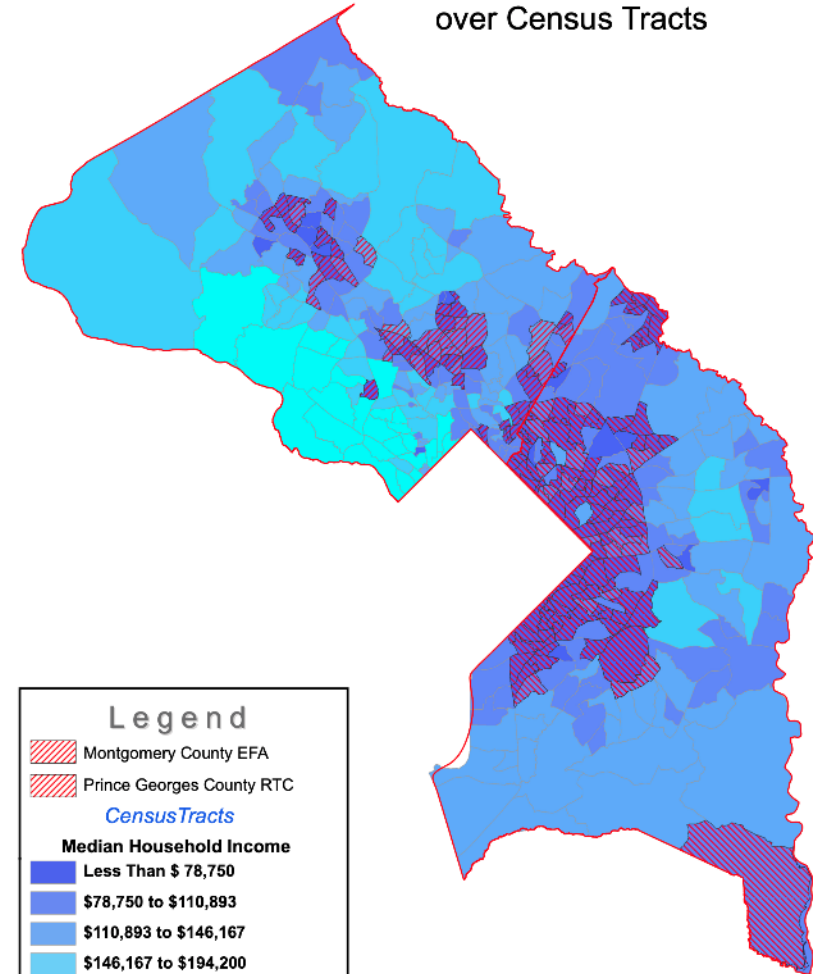
Census Tracts



MWCOG Equity Emphasis Areas over Census Tracts



RTCs and EFAs over Census Tracts



# Water Distribution

## Water Reconstruction Program (W-1.00)

The purpose of this program is to renew and extend the useful life of water mains, house connections, and large water services.

### **FY 2024 New Projects**

Jervis St. Water Main Replacement: Started design on the replacement of 4-inch, 8-inch, and 10-inch water mains in Clinton area of Prince George's County, Maryland.

**FY 24 Budget: \$87.18M**





## Water Distribution

### Large Diameter Water Pipe & Large Valve Rehabilitation Program (W-1.61.01)

The purpose of this program is to plan, inspect, design, and rehabilitate or replace large diameter water transmission mains and large system valves that have reached the end of their useful life.

**FY 24 Budget: \$79.32M**

### **FY 2024 New Projects**

Rosaryville Water Main Replacement: Started work on 207 feet of water main replacement and 2,910 feet of water main installation in in Upper Marlboro in Prince George's County.



## Wastewater Collection Sewer Reconstruction Program (S-1.01 )

### **FY 2024 New Projects:**

Started work on 2300 linear feet of sewer main replacement in Oxon Run Basin.

**FY 24 Budget: \$65.43M**



## Wastewater Collection

# Trunk Sewer Reconstruction Program

(S-170.09 )

### **FY 2024 New Projects:**

Started lining and replacing 1.15 miles of sewer main in Piscataway Creek Basin.

**FY 24 Budget: \$55.17M**

# CAPITAL INVESTMENT PRIORITIES

- Facilities planning
- Upgrades to Water Filtration Plants & Water Resource Recovery Facilities
- PFAS mitigation
- Emerging contaminants & other regulatory changes
- Upgrade aging pumping stations & force mains
- Completion of Piscataway Bioenergy facility
- Upgrading the meter infrastructure
- Clean energy/decarbonization project portfolio
- Modernize depots
- Be intentional in addressing equity and environmental justice

# COMMUNITY OUTREACH



DOOR HANGERS



NOTIFICATION LETTERS



POSTCARDS



COMMUNITY MEETING



CONSTRUCTION



FOLLOW-UP CONSTRUCTION MEETINGS







# CURRENT PROJECTS

# ALLENTOWN ROAD

**Streets Impacted:** Allentown Road, Kiddiminster Avenue, & Temple Hill Road

**Project Work:** 3.53 miles of 4-inch to 42-inch diameter water mains

**Key Contacts:**

WSSC Water Construction Manager: Dan Hamilton,  
301-642-5608, [Dan.Hamilton@wsscwater.com](mailto:Dan.Hamilton@wsscwater.com)

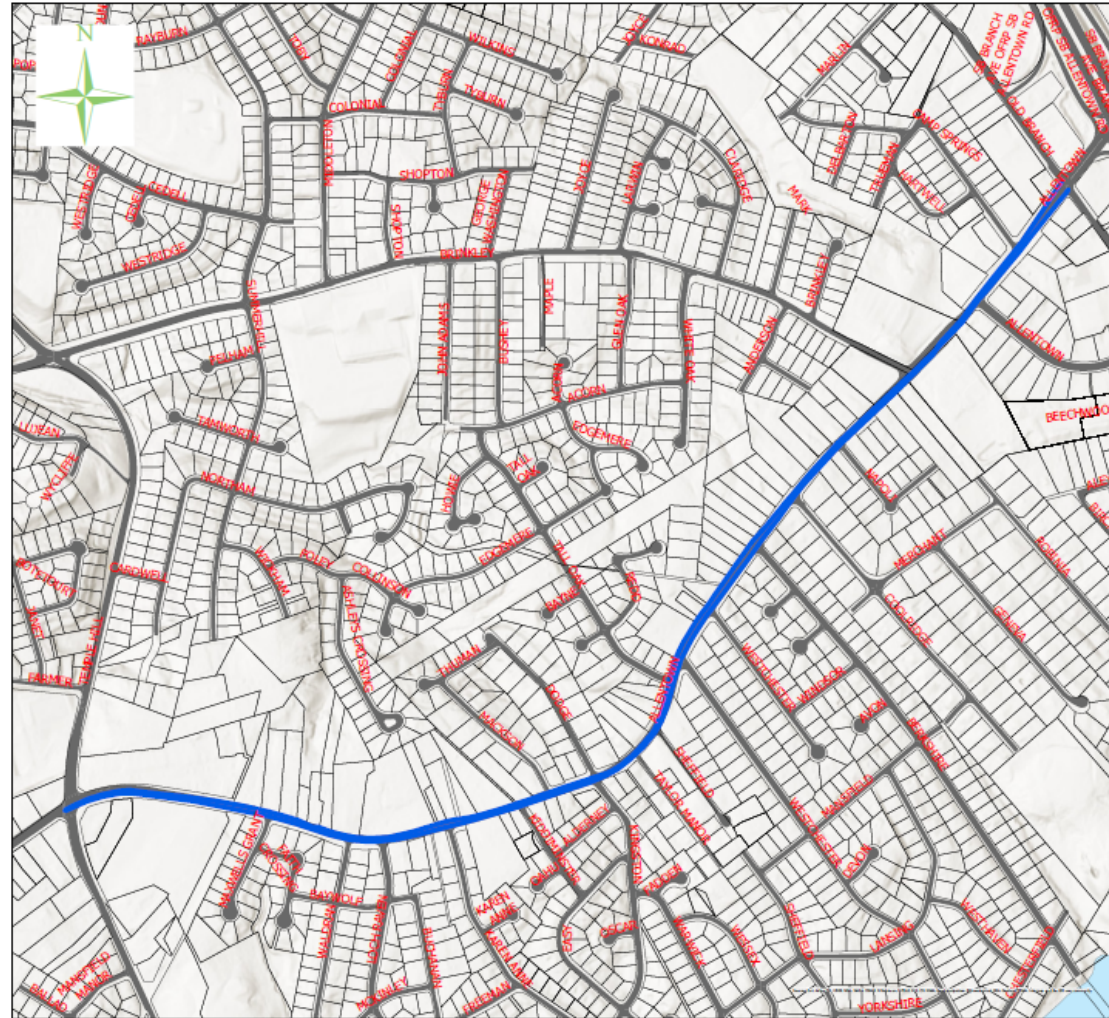
WSSC Water Technical Contract Supervisor: Mike Dobbs,  
301-535-8700 [michael.dobbs@wsscwater.com](mailto:michael.dobbs@wsscwater.com)

**Anticipated Completion Date:**  
**Late Fall 2024 (pending weather)**

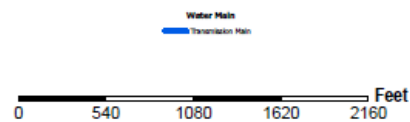


# Allentown Road

BT6289A17



**Transmission Water Main Replacement**





# PATUXENT RAW WATER



**Streets Impacted:** Bond Mill Rd, Brooklyn Bridge Rd, West Bond Mill Rd

**Project Work:** Installation of 2.53 miles of 30" to 48" diameter raw water mains. Relocation/replacement of 0.15 miles of 8" water main

**Key Contacts:**

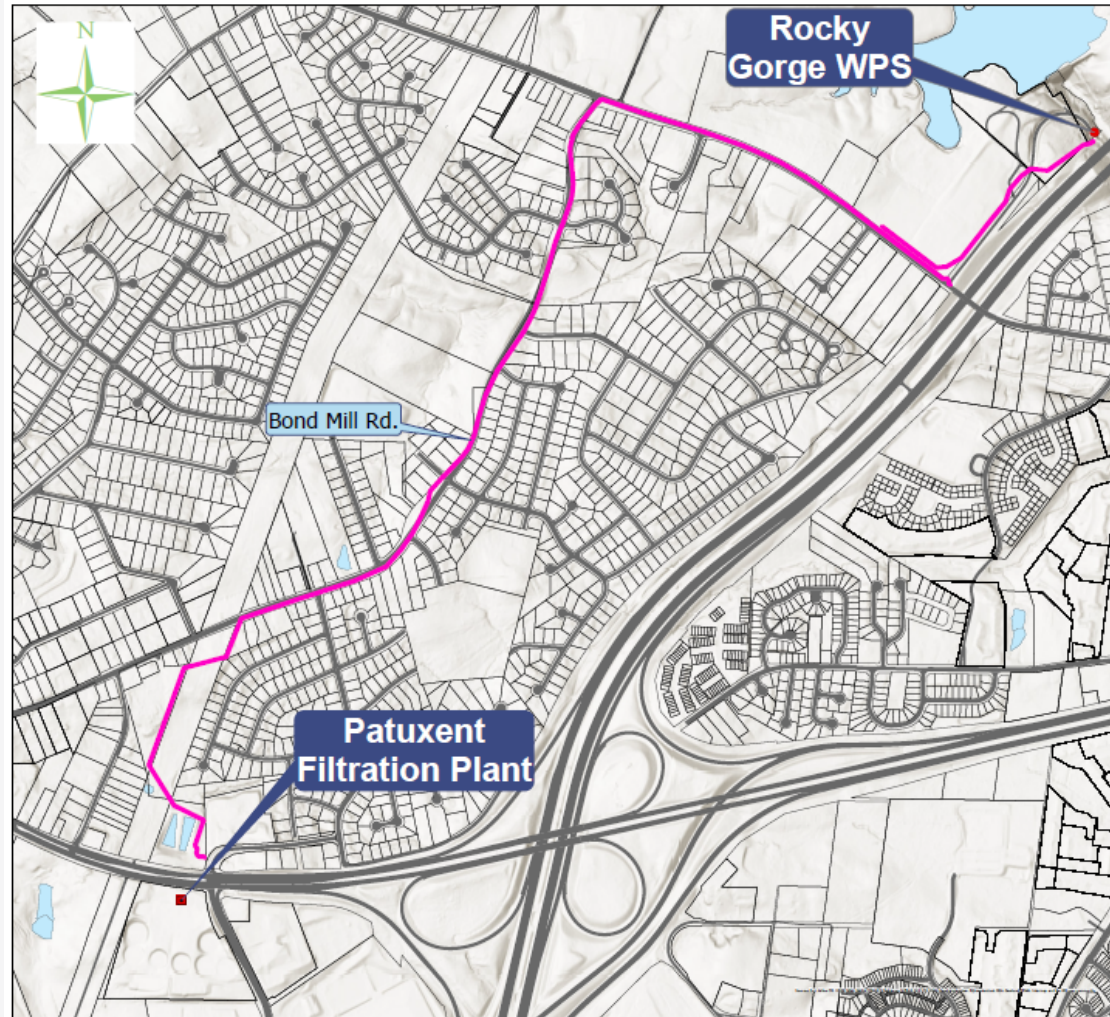
WSSC Water Construction Manager: Jason Flory,  
301-256-6851, [jason.flory@wsscwater.com](mailto:jason.flory@wsscwater.com)

WSSC Water Technical Contract Supervisor: Jose Paz,  
240-508-9543, [jose.paz@wsscwater.com](mailto:jose.paz@wsscwater.com)

**Anticipated Completion Date:**  
**Late Fall 2024**

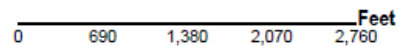
# 48" Patuxent Raw Water Pipeline

BF1582E91



**Path of 48" Raw Water to Patuxent Water Filtration Plant**

Additional Raw Water Pipe  
Water Main



# CANTRELL ROAD WATER MAIN REPLACEMENT

**Streets Impacted:** Cantrell Road, Ansted Road, Sturtevant Road, Pelling Court, Seattle Avenue, Fireside Drive, Claude Lane

**Project Work:** Water Main Replacement 1.97 Miles- Replace 4" to 10" diameter water mains and House Connections To Property Line

## Key Contacts:

WSSC Water Construction Manager:

Kevin Lethbridge, 301-206-7339

[Kevin.Lethbridge@wsscwater.com](mailto:Kevin.Lethbridge@wsscwater.com)

Technical Contract Supervisor:

Robert Levery, 301-206-7339

[Robert.Levery@wsscwater.com](mailto:Robert.Levery@wsscwater.com)

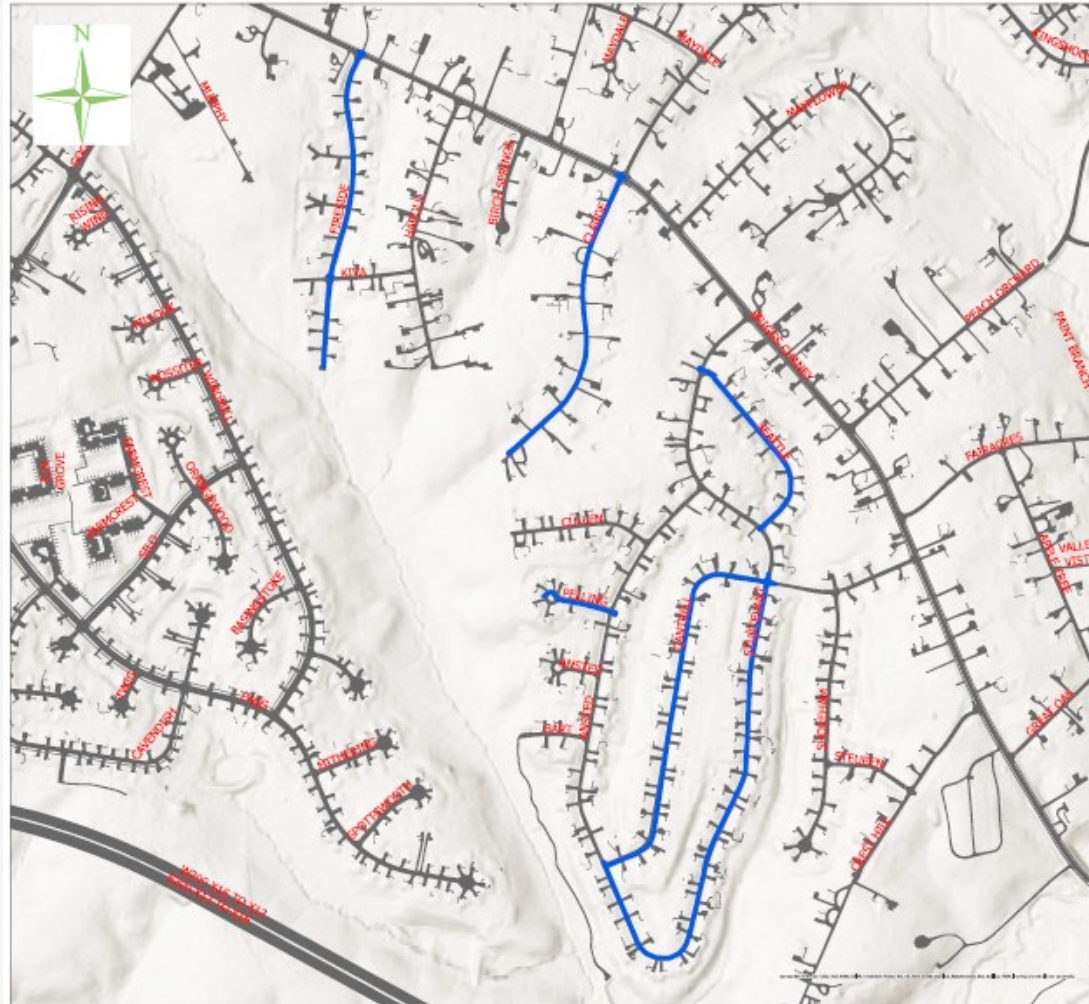
Contractor: TBD

**Anticipated Start Date:  
Mid Summer 2024**



# Cantrell Road

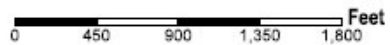
BR6472A18



## Water Main Replacement

Water Mains

Water Main



# MONTGOMERY VILLAGE

**Streets Impacted:** Montgomery Village Ave, Midcounty Highway, Lakeshore Drive, Walkers Choice Rd, Stedwick Road, Whetstone Drive, Centerway Road

**Project Work:** Replacing/Relocating 1.09 miles of 24" diameter water mains

**Key Contacts:**

WSSC Water Construction Manager: Collins Njoku, 240.882.2742, [Collins.Njoku@wsscwater.com](mailto:Collins.Njoku@wsscwater.com)

WSSC Water Technical Contract Supervisor: Terry Wilkins, 240.848.2374, [Terry.Wilkins@wsscwater.com](mailto:Terry.Wilkins@wsscwater.com)

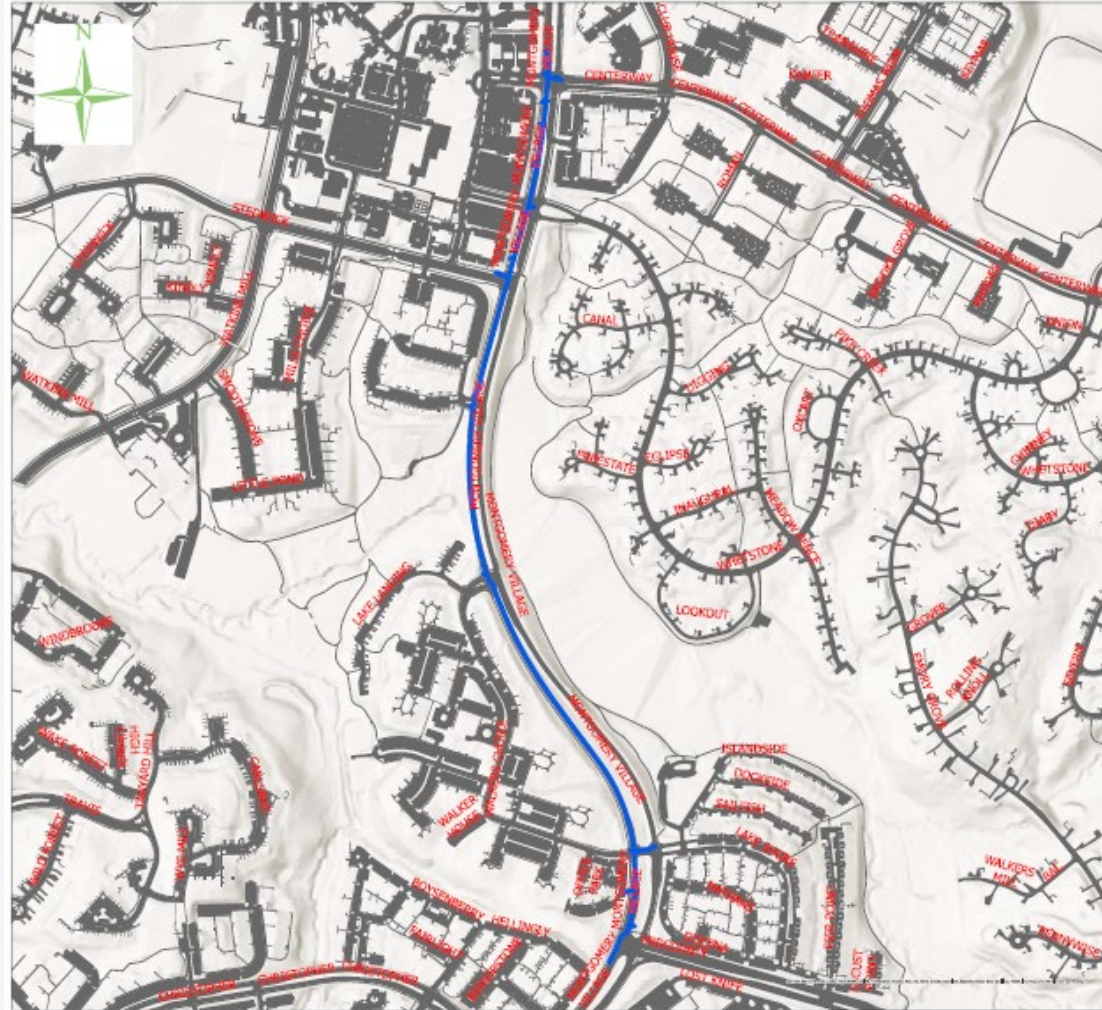
**Anticipated Completion Date:**  
**Winter 2024**





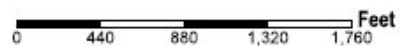
# Montgomery Village WMR 24"

BT6496A18



## Water Main Replacement

Water Mains  
Water Main



# WHAT TO EXPECT DURING CONSTRUCTION

## Anticipated Work Hours

- Monday-Friday, 9:00 a.m. – 3:30 p.m.
- Work may occasionally extend beyond these hours to complete specific tasks.

## Traffic Impacts

- Possible temporary changes to traffic patterns
- Access will be maintained to homes during construction

## Parking Restrictions

- 48-hour advance notice for (denoted by “No Parking” signs)
- Vehicles that have not been removed will be towed to a nearby
- street at no cost to the owner.
- Final restoration of sidewalks, roadways and landscaping will take place within 90 days of construction completion.



# PROJECT INFORMATION

<https://www.wsscwater.com/what-we-do/major-projects>

[Home](#) » [What We Do](#) » [Major Projects](#)

## Major Projects

For more than 100 years, WSSC Water has delivered safe, clean water to Montgomery and Prince George's county residents. To continue doing so requires the ongoing maintenance of thousands of miles of water mains - and planning for big projects with an eye on the future.

Bioenergy	Bioenergy
Community Conversations	The future is taking shape in the form of a cutting-edge bioenergy facility we're building at the Piscataway Water Resource Recovery Facility. <a href="#">Read more</a> →
Community Project Meetings	
Dam Rehabilitation	
Laboratory Expansion Project	
Little Seneca Reservoir Project	
Pipes and Infrastructure Improvements and Maintenance	
Pointer Ridge Water Tower	

Questions?  
ProjectFeedback@wsscwater.com

