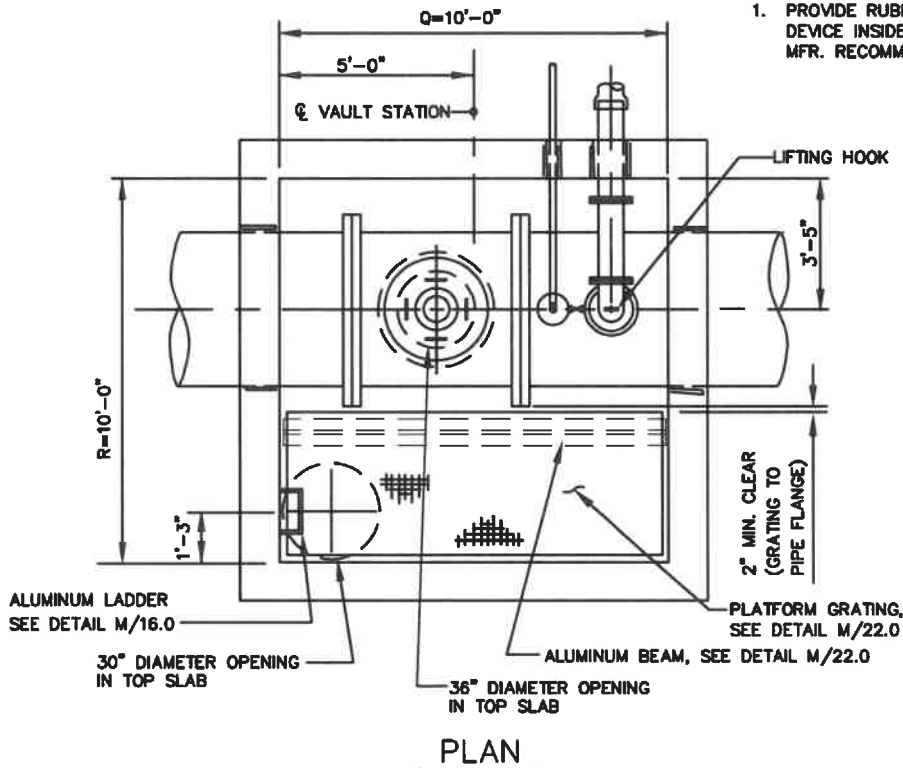


NOTES

1. PROVIDE RUBBER ANNULAR HYDROSTATIC SEALING DEVICE INSIDE STEEL WALL SLEEVE (SIZED PER MFR. RECOMMENDATIONS) SEE SPECIFICATIONS.



WASHINGTON
SUBURBAN
SANITARY
COMMISSION

APPROVED: 7-26-21
M. W. Hammer
Chief Engineer

STANDARD DETAIL
AIR/VACUUM VALVE VAULT
AND ENTRY PORT VAULT
FOR 36" TO 48"
DIAMETER PIPES

W
10.5