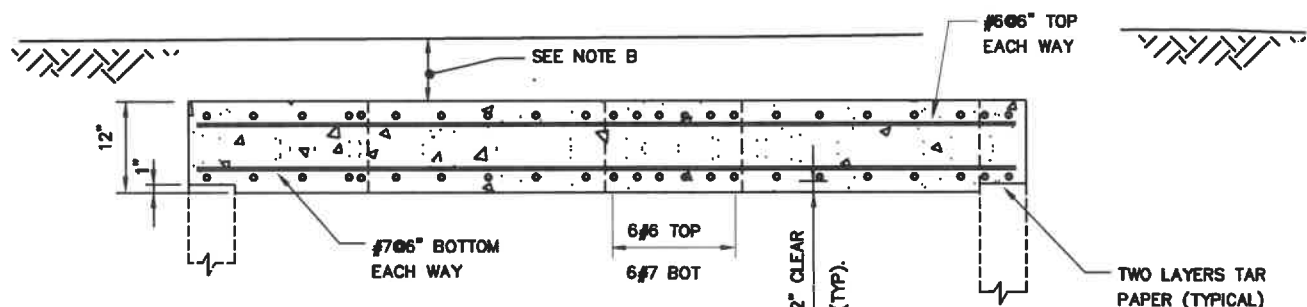


**PLAN**



**SECTION A-A**

**CAST IN PLACE CONCRETE TOP SLAB NOTES:**

1.  $f'_c = 4000$  PSI. @ 28 DAYS
2.  $f_y = 60,000$  PSI.
3. TOP SLABS ARE DESIGNED FOR THE FOLLOWING CONDITIONS:
  - a). H20LL + 0% IMPACT+ 3.5' MAXIMUM EARTH COVER
  - b). H20LL + 30% IMPACT+ 1' EARTH COVER
4. CONTRACTOR MAY USE PRECAST TOP SLABS, SEE SPECIFICATIONS FOR SUBMITTAL REQUIREMENTS.

**NOTE:**

- A. FOR DETAILS OF COMPOUND METERS SEE DETAIL W/5.1. FOR 10" FM METERS SEE DETAIL W/5.0g AND 6" & 8" FM METER WITH CHECK VALVE, SEE W/5.0c. AND 10" ULTRASONIC METER, SEE W/14.0a.
- B. 2'-6" MAXIMUM COVER OVER TOP SLAB, FOR MINIMUM COVER, SEE DETAIL W/5.5.

WASHINGTON  
SUBURBAN  
SANITARY  
COMMISSION

APPROVED: 7-26-21  
*Mike Armer*  
Chief Engineer

STANDARD DETAIL  
CAST IN PLACE  
CONCRETE TOP SLAB FOR  
ULTRASONIC METER AND  
FM METER W/ CHECK VALVE VAULT

W  
5.25