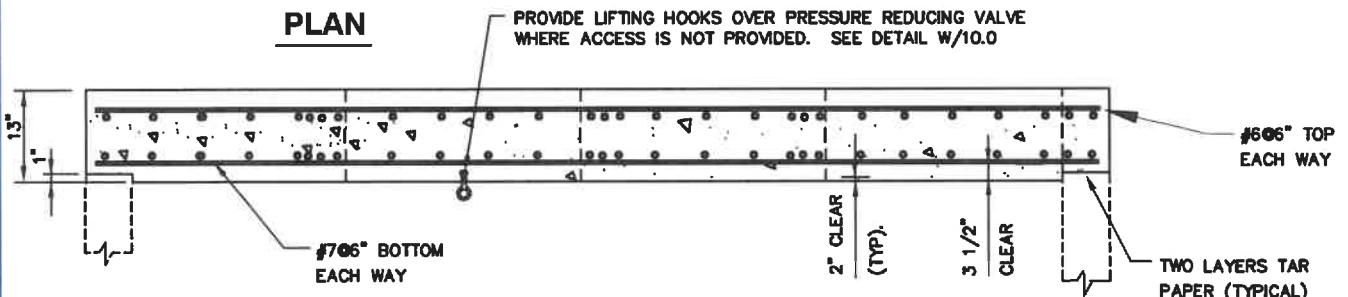


**PLAN**




**SECTION A-A**

**CAST IN PLACE CONCRETE TOP SLAB NOTES**

**VALVE REMOVAL OPENING NOTES:**

- A. FOR 4" VALVE NO OPENINGS ARE REQUIRED. PROVIDE 1 PIECE TOP SLAB REINFORCED AS PER DETAIL W/5.2

1.  $f_c = 4000$  PSI. ● 28 DAYS
2.  $f_y = 60,000$  PSI.
3. TOP SLABS ARE DESIGNED FOR THE FOLLOWING CONDITIONS:
  - a). H20LL + 0% IMPACT+ 3.5' MAXIMUM EARTH COVER
  - b). H20LL + 30% IMPACT+ 1' EARTH COVER
4. CONTRACTOR MAY USE PRECAST TOP SLABS, SEE SPECIFICATIONS FOR SUBMITTAL REQUIREMENTS.
5. FOR ADDITIONAL INFORMATION, SEE DETAIL W/4.2.

WASHINGTON SUBURBAN SANITARY COMMISSION	APPROVED: <u>7-26-21</u>   Chief Engineer	STANDARD DETAIL <b>CAST IN PLACE CONCRETE TOP SLAB FOR TYPE "1" LAYOUT PRESSURE REDUCING VALVE VAULTS</b>	$\frac{W}{5.22}$
--	---	--	------------------