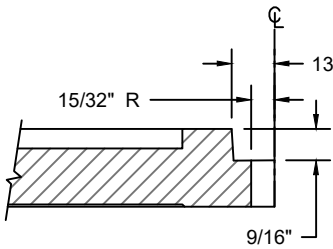
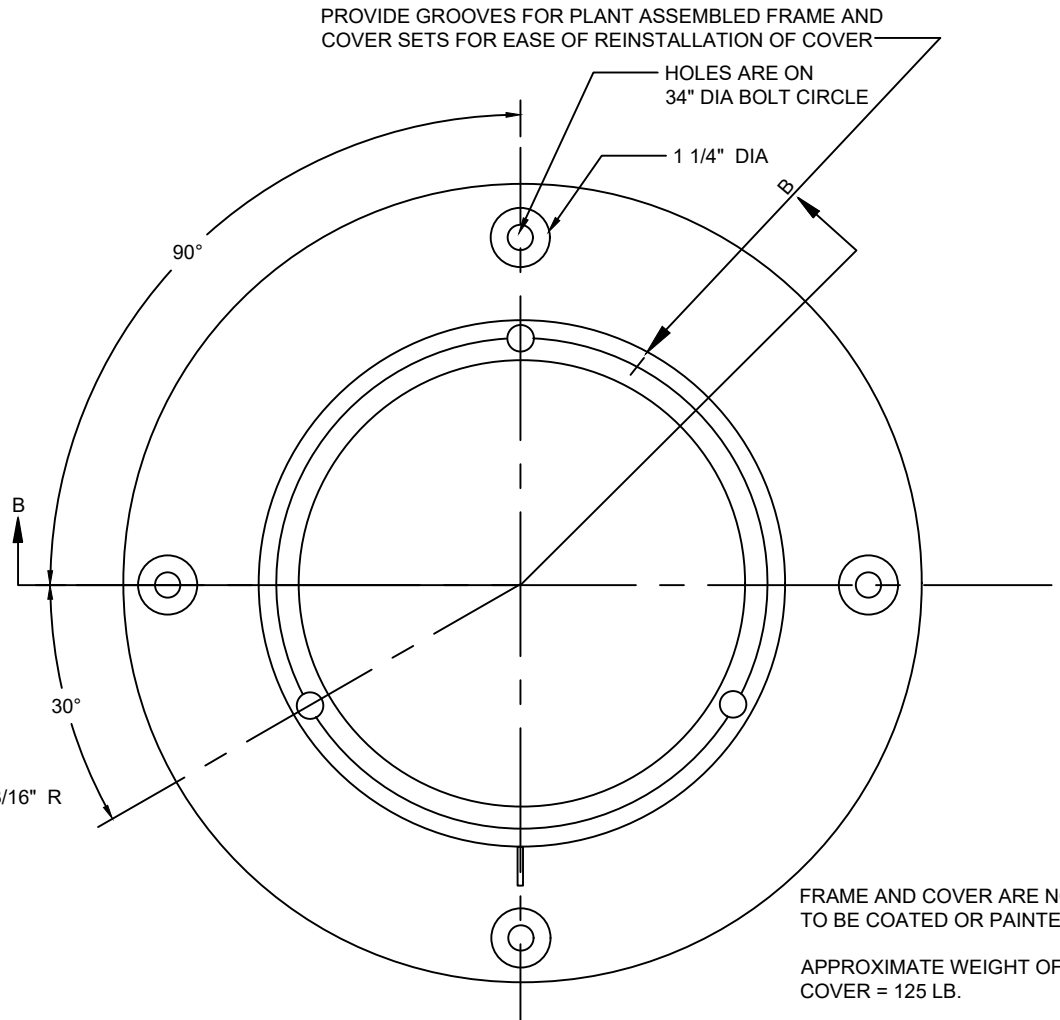


**STAINLESS BOLT
DETAILS**



COUNTERBORE DETAIL



PROVIDE GROOVES FOR PLANT ASSEMBLED FRAME AND COVER SETS FOR EASE OF REINSTALLATION OF COVER

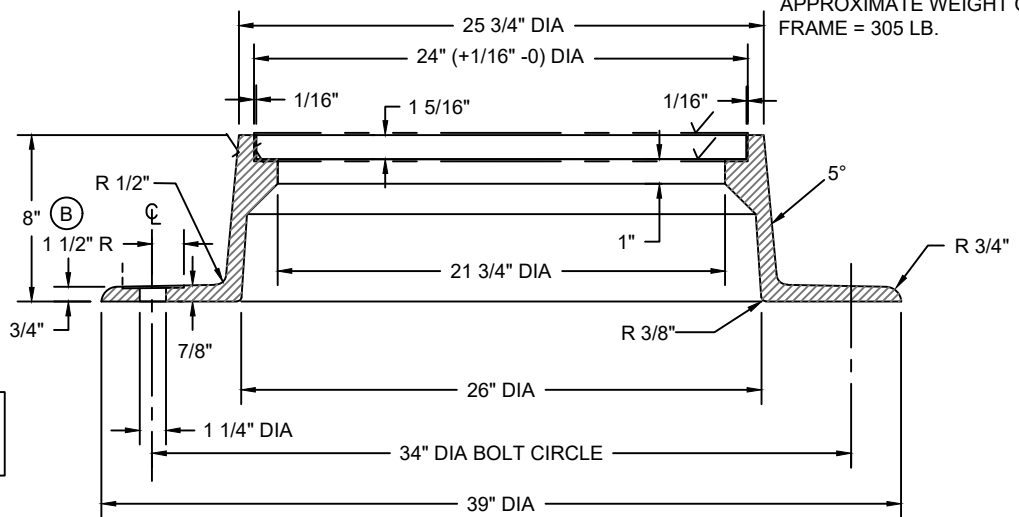
HOLES ARE ON 34" DIA BOLT CIRCLE

1 1/4" DIA

FRAME AND COVER ARE NOT TO BE COATED OR PAINTED

APPROXIMATE WEIGHT OF COVER = 125 LB.

APPROXIMATE WEIGHT OF FRAME = 305 LB.



SECTION B - B

APPLICABLE STOCK NOS.

5680-9025-2

5680-9028-6

5680-9050-0

SEE DETAIL P&M 10.7a FOR CONTINUATION

MATERIAL SPECIFICATION:
GRAY IRON ASTM A48 CL35B

CASTINGS SHALL CONFORM TO AND BE MANUFACTURED IN ACCORDANCE WITH THE REQUIREMENTS OF AASHTO STD M306, LATEST REVISION

WASHINGTON
SUBURBAN
SANITARY
COMMISSION

REVISIONS:
APPROVED: May 4, 2021 | 12:46 PM EDT

DocuSigned by:
Jaime Garcia
MATERIALS MANAGEMENT DIVISION MANAGER

PROCUREMENT AND MANUFACTURING DETAIL
**LOCKING TYPE-
WATERTIGHT 22" MANHOLE
FRAME & COVER**

**P&M
10.7b**