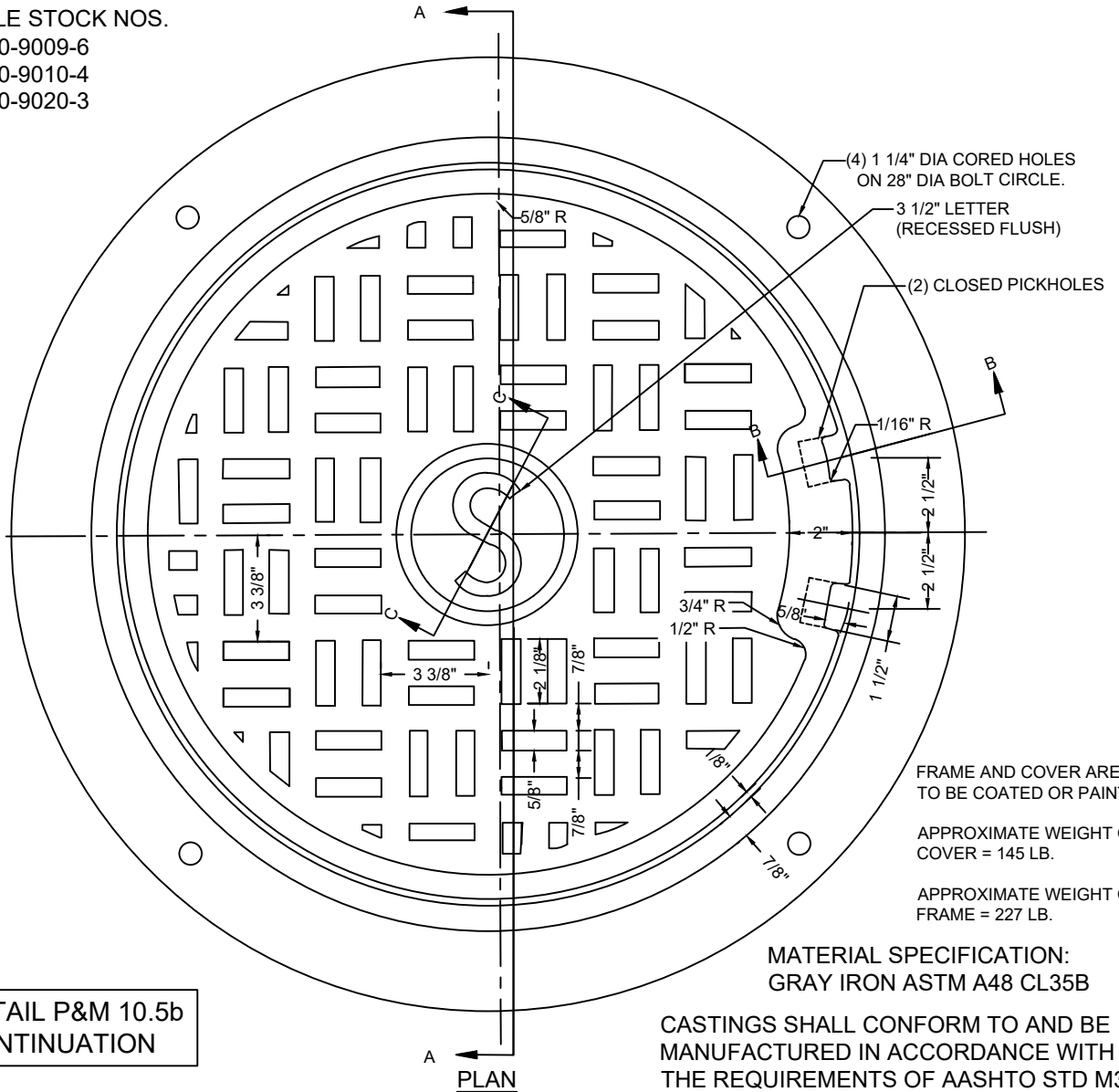


APPLICABLE STOCK NOS.

- 5680-9009-6
- 5680-9010-4
- 5680-9020-3



FRAME AND COVER ARE NOT TO BE COATED OR PAINTED

APPROXIMATE WEIGHT OF COVER = 145 LB.

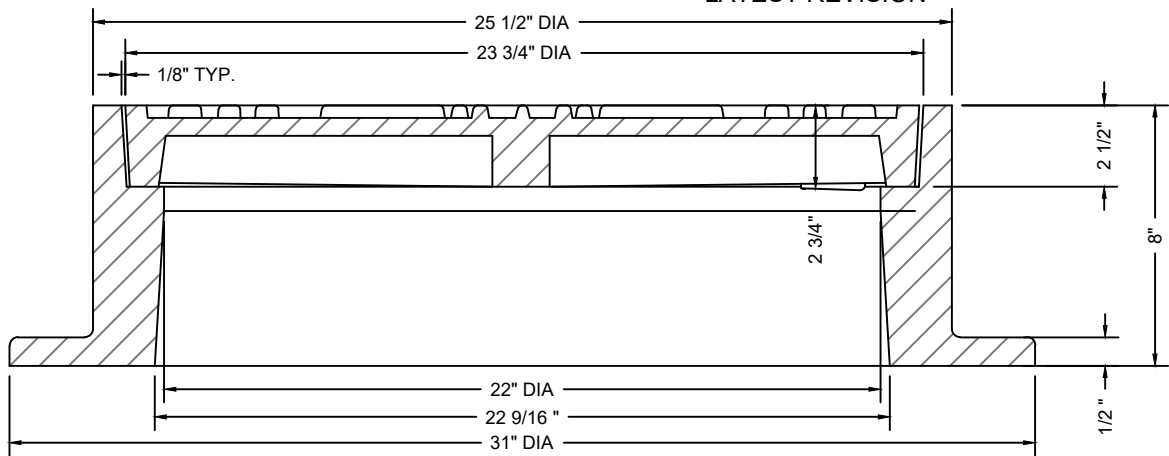
APPROXIMATE WEIGHT OF FRAME = 227 LB.

MATERIAL SPECIFICATION:
GRAY IRON ASTM A48 CL35B

CASTINGS SHALL CONFORM TO AND BE MANUFACTURED IN ACCORDANCE WITH THE REQUIREMENTS OF AASHTO STD M306, LATEST REVISION

SEE DETAIL P&M 10.5b FOR CONTINUATION

PLAN



FRAME SECTION A-A

WASHINGTON
SUBURBAN
SANITARY
COMMISSION

REVISIONS: May 4, 2021 | 12:46 PM EDT PROCUREMENT AND MANUFACTURING DETAIL

APPROVED: _____

DocuSigned by:
Jaime Garcia

B7DBE23469C84BD
MATERIALS MANAGEMENT DIVISION MANAGER

**NON-LOCKING STANDARD 22"
NON-WATERTIGHT
MANHOLE FRAME & COVER**

**P&M
10.5a**