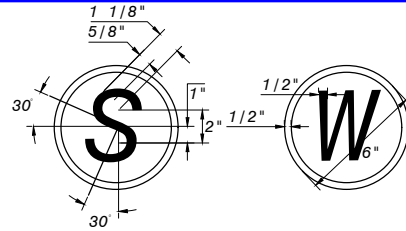
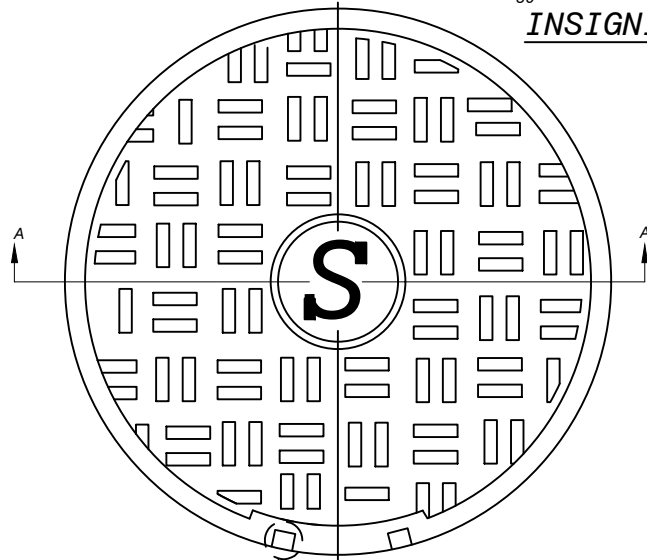


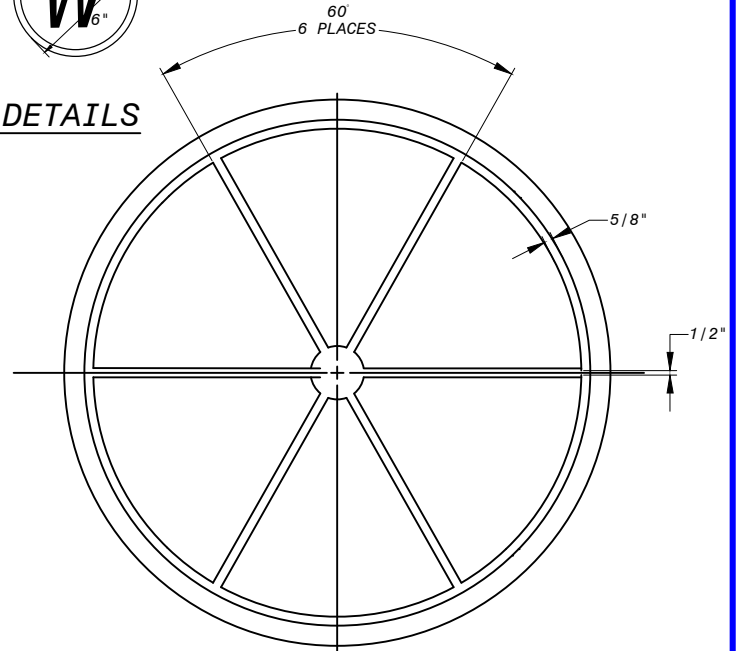
APPLICABLE STOCK NO.  
5690-9004-7 (SEWER)



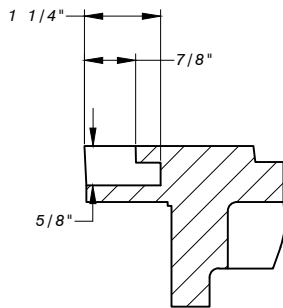
INSIGNIA DETAILS



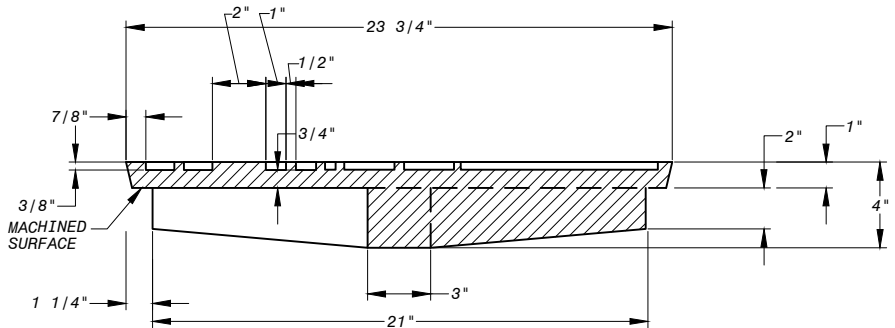
SEE DETAIL B TOP



BOTTOM



DETAIL B  
PICKHOLE



SECTION A-A

SECTION TO BE GRAY IRON CASTING,  
ASTM A-48 CLASS NO. 35B

CASTING SHALL CONFORM TO AND BE MANUFACTURED  
IN ACCORDANCE WITH THE REQUIREMENTS OF  
AASHTO STD M306, LATEST REVISION

NOTE: COVER FOR USE ONLY WITH THE FOLLOWING:  
- 1 1/2". ADJUSTING RING, WSSC SN 5680-9001-3  
- 2" ADJUSTING RING, WSSC SN 5680-9002-1

\* AT THE MANUFACTURER'S OPTION, IN PLACE OF 6 RIBS,  
60° APART, 8 RIBS CAN BE PLACED 45° APART.

ALL DIMENSION ARE IN INCHES  
UNLESS OTHERWISE SPECIFIED.

TOLERANCES: ± 1/16"

WASHINGTON  
SUBURBAN  
SANITARY  
COMMISSION

REVISIONS:  
APPROVED: May 4, 2021 | 12:46 PM EDT

DocuSigned by:  
*Jaime Garcia*

B7DBE23469C84BD...  
MATERIALS MANAGEMENT DIVISION MANAGER

PROCUREMENT AND MANUFACTURING DETAIL

22" MANHOLE ADJUSTING  
RING COVER

P&M  
6.2