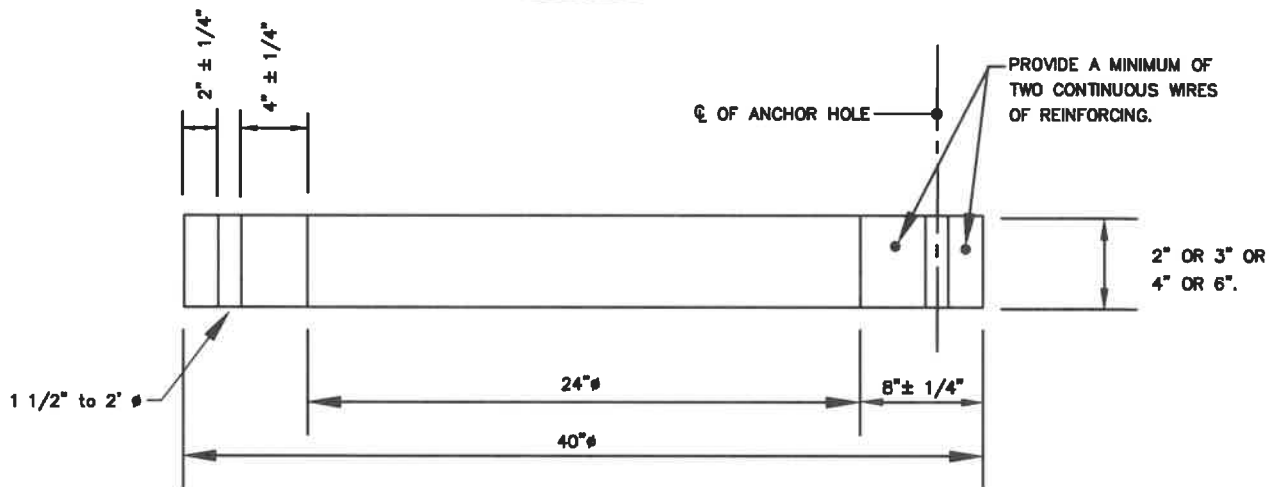


1 1/2"-2" ϕ ANCHOR HOLES 90° APART.



NOTES:

1. PRECAST CONCRETE $f_c=5000$ PSI @ 28 DAYS.
2. REINFORCEMENT SHALL CONFORM TO ASTM C-478.
3. CAST LIFT LUGS ARE REQUIRED FOR 4" AND 6" RINGS.

WASHINGTON
SUBURBAN
SANITARY
COMMISSION

APPROVED: 7-7-21

Mike Hammer
Chief Engineer

STANDARD DETAIL

24-INCH PRECAST CONCRETE
MANHOLE TRANSITION RING

S
4.21