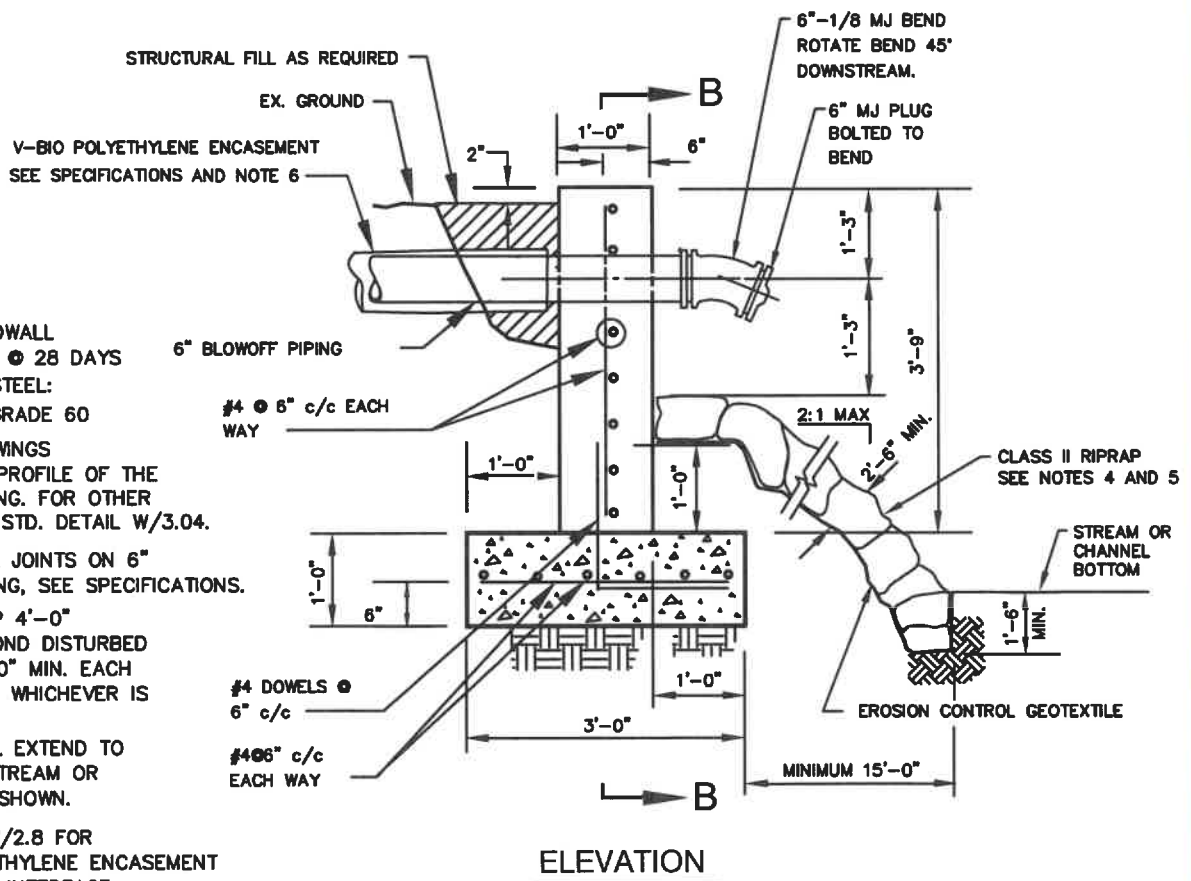


SECTION 'B-B'



ELEVATION

NOTES:

1. CONCRETE ENDWALL
F_c 4,000 PSI @ 28 DAYS
REINFORCED STEEL:
ASTM A615, GRADE 60
2. SEE THE DRAWINGS
FOR ACTUAL PROFILE OF THE
BLOWOFF PIPING. FOR OTHER
DETAILS, SEE STD. DETAIL W/3.04.
3. RESTRAIN ALL JOINTS ON 6"
BLOWOFF PIPING, SEE SPECIFICATIONS.
4. PLACE RIPRAP 4'-0"
MINIMUM BEYOND DISTURBED
AREA OR 6'-0" MIN. EACH
SIDE OF PIPE, WHICHEVER IS
GREATER.
5. RIPRAP SHALL EXTEND TO
BOTTOM OF STREAM OR
CHANNEL AS SHOWN.
6. SEE DETAIL W/2.8 FOR
V-BIO POLYETHYLENE ENCASEMENT
AT END WALL INTERFACE.

WASHINGTON
SUBURBAN
SANITARY
COMMISSION

APPROVED: 7-26-21
Mike Hammer
Chief Engineer

STANDARD DETAIL
ENDWALL FOR TYPE "B"
BLOWOFF

W
3.01